

OSTIUM VESTIBULES - TYPE 1

PRE-ENGINEERED ARCHITECTURAL SYSTEMS

ARCHITECT:

ARCH. NAME

ARCH. ADDRESS 1
ARCH. ADDRESS 2
ARCH. CONTACT #

GLASS + METAL
CRAFT

48230 WEST ROAD
WIXOM, MI 48393
P. 248.624.5050
F. 248.624.6988



GLAZING SCHEDULE

SYSTEM NOTES

DESIGN CRITERIA

SUBMITTAL LOG

TYPE: GL-1 (GL-1) 13/16" LAMINATED GLASS

MAKEUP: 1/8" TEMPERED GLASS
0.060" CLEAR SGP INTERLAYER
1/8" TEMPERED GLASS

NOTES:
EXPOSED EDGES TO BE FLAT POLISHED

LAMINATED LOGO: NO LOGO:

*TEMPERING LOGO AVAILABLE UPON REQUEST

NO.	DESCRIPTION	DATE	BY
1	PROPOSAL / PROGRESS REVIEW SUBMITTAL	XX.XX.XX	AL
2			
3			
4			
5			
6			

PROPRIETARY NOTICE:
THIS DRAWING SHEET AND CONTENTS HEREIN ARE PROPERTY OF GLASS AND METAL CRAFT AND ITS CUSTOMERS. USE OF THESE DRAWINGS, ITS CONTENT AND DESIGN CONCEPTS ARE INTENDED FOR THE USE OF THE INTENDED RECIPIENT. GLASS AND METAL CRAFT AND ITS CUSTOMERS ARE NOT RESPONSIBLE FOR USE BY OTHER PARTIES.

METAL FINISH

SHEET INDEX

C1	COVER SHEET
P1	PLAN VIEWS
E1	ELEVATIONS
D1 THRU D4	DETAILS

SUBMITTED FOR PRELIMINARY REVIEW. FOR DESIGN REPRESENTATION ONLY. THIS SUBMITTAL HAS NOT BEEN ENGINEERED TO ACCOMMODATE SITE-SPECIFIC CONDITIONS FOR THIS SYSTEM.

REVISION	DATE
SI	XX.XX.XX
1	-
2	-
3	-
4	-

DRAWN BY: AL	DATE: XX.XX.XX
--------------	----------------

ABBREVIATIONS

GLASS GLASS ORIENTATION	(E1-1A) GLASS TAG
⊕ WORKPOINT	(GL-1) GLASS GL TYPE
F.O. - FINISH OPENING	W.P. - WORK POINT
R.O. - ROUGH OPENING	F.F. - FINISH FLOOR
C.O. - CLEAR OPENING	V.I.F. - VERIFY IN FIELD
D.O. - DOOR OPENING	O.H. - OPPOSITE HAND
G.S. - GLASS SIZE	SIM. - SIMILAR
D.S. - DOOR SIZE	EQ. - EQUAL
E.O.G. - EDGE OF GLASS	⌀ - CENTERLINE

ARCHITECT:
ARCHITECTURE FIRM NAME

GMC SYSTEM TYPE:
OSTIUM VESTIBULES - TYPE 1

PROJECT NAME:
PROJECT NAME

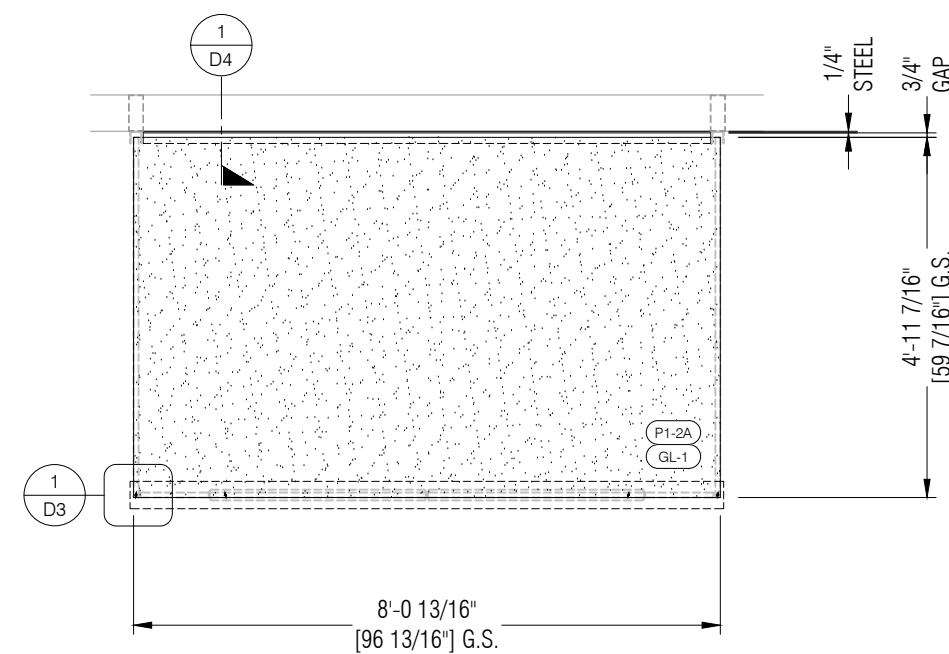
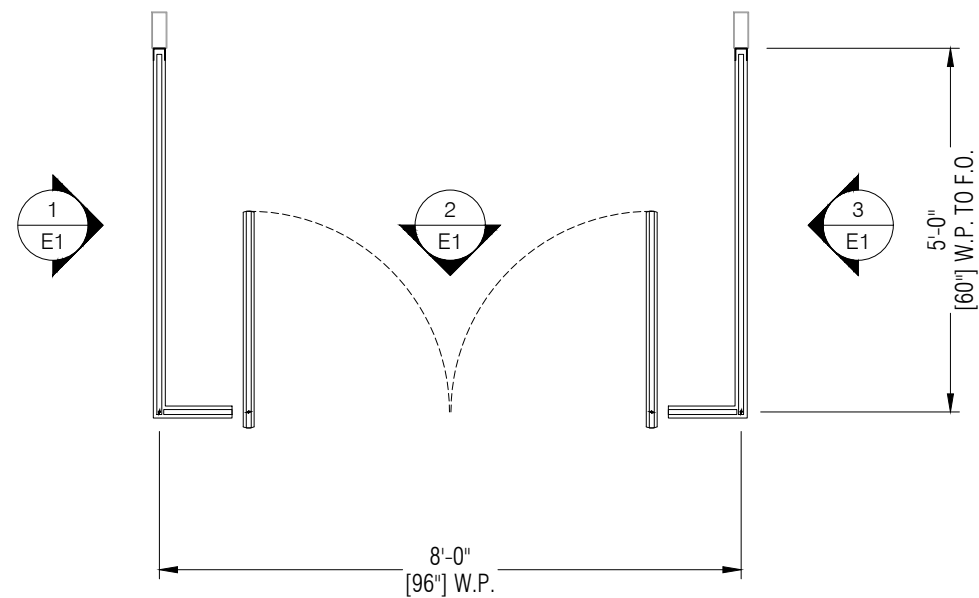
SHEET DESCRIPTION:
COVER SHEET

SHEET:
C1



GLASS+
METAL
CRAFT

PROPRIETARY NOTICE:
THIS DRAWING SHEET AND CONTENTS HEREIN ARE PROPERTY OF GLASS AND METAL CRAFT AND ITS CUSTOMERS. USE OF THESE DRAWINGS, ITS CONTENT AND DESIGN CONCEPTS ARE INTENDED FOR THE USE OF THE INTENDED RECIPIENT. GLASS AND METAL CRAFT AND ITS CUSTOMERS ARE NOT RESPONSIBLE FOR USE BY OTHER PARTIES.



SUBMITTED FOR PRELIMINARY REVIEW. FOR DESIGN REPRESENTATION ONLY. THIS SUBMITTAL HAS NOT BEEN ENGINEERED TO ACCOMMODATE SITE-SPECIFIC CONDITIONS FOR THIS SYSTEM.

REVISION	DATE
SI	XX.XX.XX
1	-
2	-
3	-
4	-

DRAWN BY: AL DATE: XX.XX.XX

ARCHITECT:
ARCHITECTURE FIRM NAME

GMC SYSTEM TYPE:

OSTIUM VESTIBULES - TYPE 1

PROJECT NAME:
PROJECT NAME

SHEET DESCRIPTION:
PLANS

SHEET:
P1

1 VESTIBULE 1 FLOOR PLAN
P1 DRAWING SCALE:
24x36: 3/4" = 1'-0"
11x17: 3/8" = 1'-0"

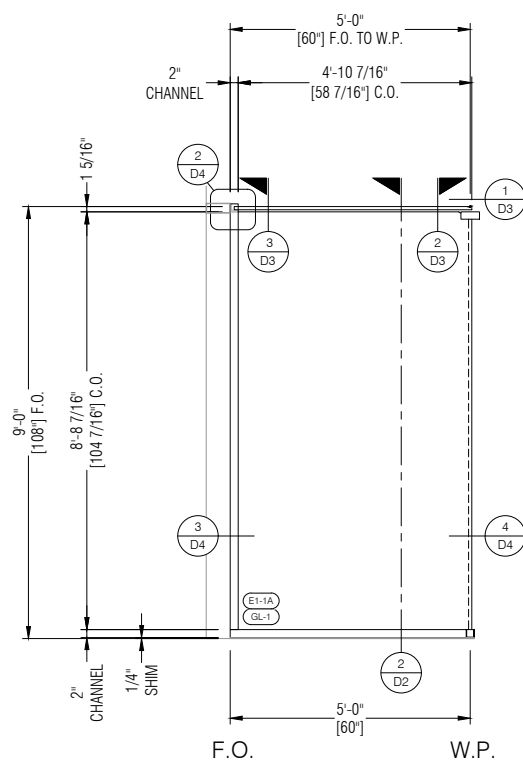
2 VESTIBULE 1 ROOF PLAN
P1 DRAWING SCALE:
24x36: 3/4" = 1'-0"
11x17: 3/8" = 1'-0"



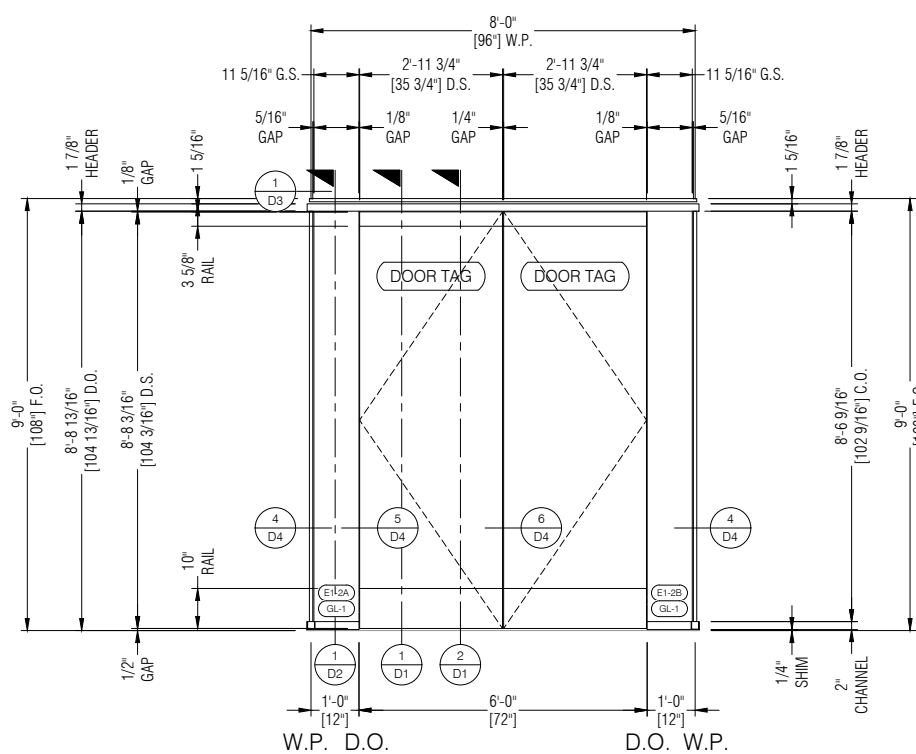
**GLASS+
METAL
CRAFT**

PROPRIETARY NOTICE:

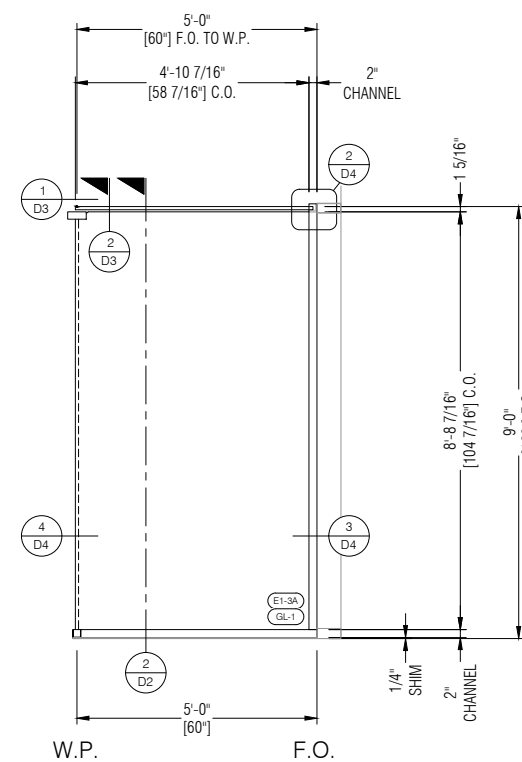
THIS DRAWING SHEET AND CONTENTS HEREIN ARE PROPERTY OF GLASS AND METAL CRAFT AND ITS CUSTOMERS. USE OF THESE DRAWINGS, ITS CONTENT AND DESIGN CONCEPTS ARE INTENDED FOR THE USE OF THE INTENDED RECIPIENT. GLASS AND METAL CRAFT AND ITS CUSTOMERS ARE NOT RESPONSIBLE FOR USE BY OTHER PARTIES.



1 ELEVATION AT RETURN
E1 DRAWING SCALE: REF: 1/P1
24x36: 1/2" = 1'-0"
11x17: 1/4" = 1'-0"



2 ELEVATION AT VESTIBULE 1
E1 DRAWING SCALE: REF: 1/P1
24x36: 1/2" = 1'-0"
11x17: 1/4" = 1'-0"



3 ELEVATION AT RETURN
E1 DRAWING SCALE: REF: 1/P1
24x36: 1/2" = 1'-0"
11x17: 1/4" = 1'-0"

SUBMITTED FOR PRELIMINARY REVIEW. FOR DESIGN REPRESENTATION ONLY. THIS SUBMITTAL HAS NOT BEEN ENGINEERED TO ACCOMMODATE SITE-SPECIFIC CONDITIONS FOR THIS SYSTEM.

REVISION	DATE
SI	XX.XX.XX
1	-
2	-
3	-
4	-

DRAWN BY: AL DATE: XX.XX.XX

ARCHITECT: ARCHITECTURE FIRM NAME

GMC SYSTEM TYPE:

OSTIUM VESTIBULES - TYPE 1

PROJECT NAME:

PROJECT NAME

SHEET DESCRIPTION:

ELEVATIONS

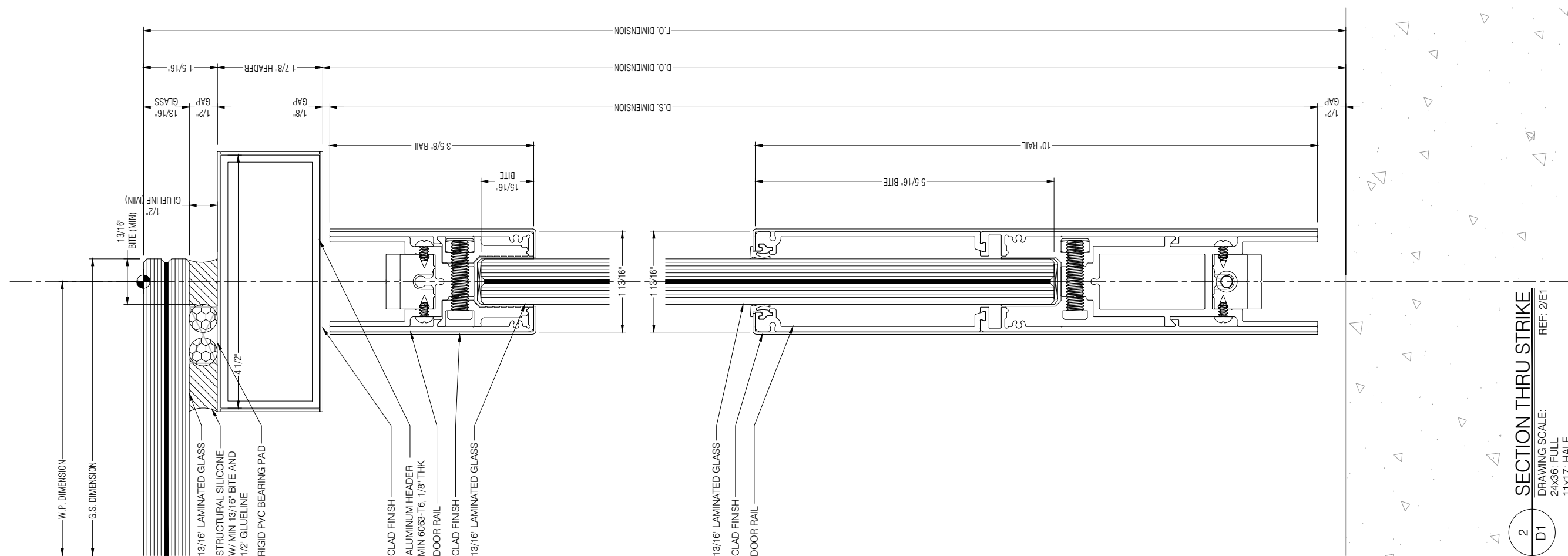
SHEET:

E1

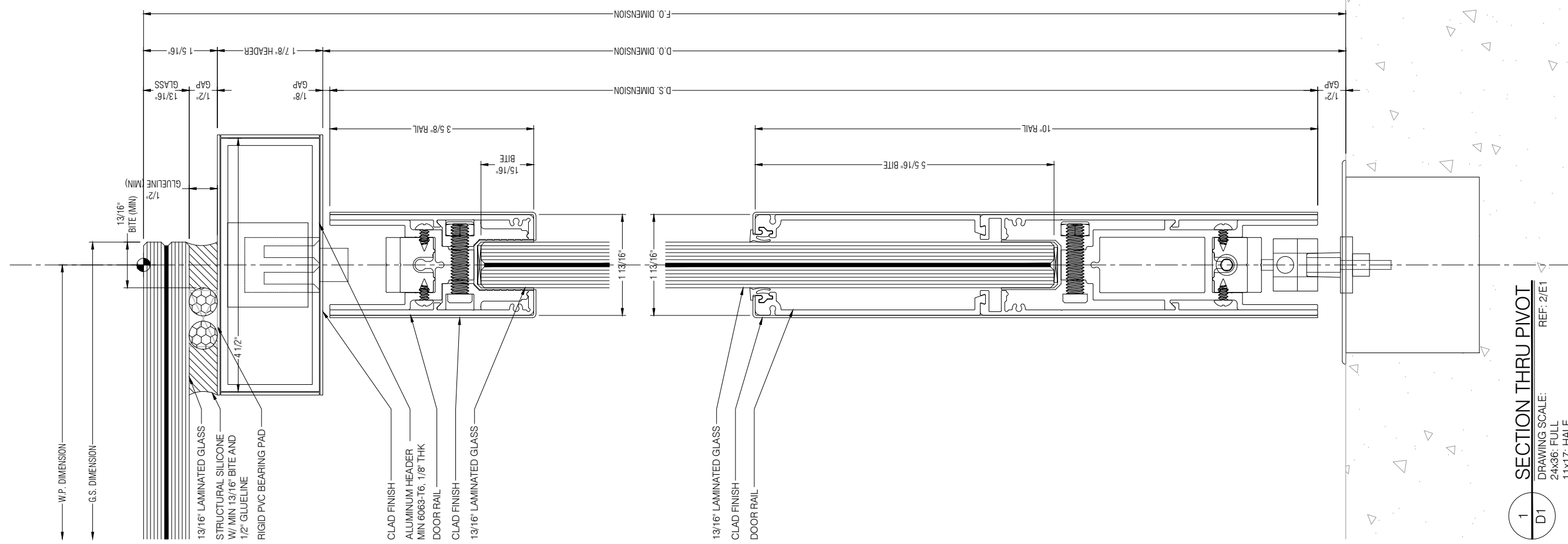


**GLASS+
METAL
CRAFT**

PROPRIETARY NOTICE:
THIS DRAWING SHEET AND CONTENTS HEREIN ARE PROPERTY OF GLASS AND METAL CRAFT AND ITS CUSTOMERS. USE OF THESE DRAWINGS, ITS CONTENT AND DESIGN CONCEPTS ARE INTENDED FOR THE USE OF THE INTENDED RECIPIENT. GLASS AND METAL CRAFT AND ITS CUSTOMERS ARE NOT RESPONSIBLE FOR USE BY OTHER PARTIES.



2 SECTION THRU STRIKE
DRAWING SCALE: 24x36: FULL 11x17: HALF
REF: 2/E1
D1



1 SECTION THRU PIVOT
DRAWING SCALE: 24x36: FULL 11x17: HALF
REF: 2/E1
D1

SUBMITTED FOR PRELIMINARY REVIEW. FOR DESIGN REPRESENTATION ONLY. THIS SUBMITTAL HAS NOT BEEN ENGINEERED TO ACCOMMODATE SITE-SPECIFIC CONDITIONS FOR THIS SYSTEM.

REVISION	DATE
SI	XX.XX.XX
1	-
2	-
3	-
4	-

DRAWN BY: AL DATE: XX.XX.XX

ARCHITECT: ARCHITECTURE FIRM NAME

GMC SYSTEM TYPE:

OSTIUM VESTIBULES - TYPE 1

PROJECT NAME:

PROJECT NAME

SHEET DESCRIPTION:

DETAILS

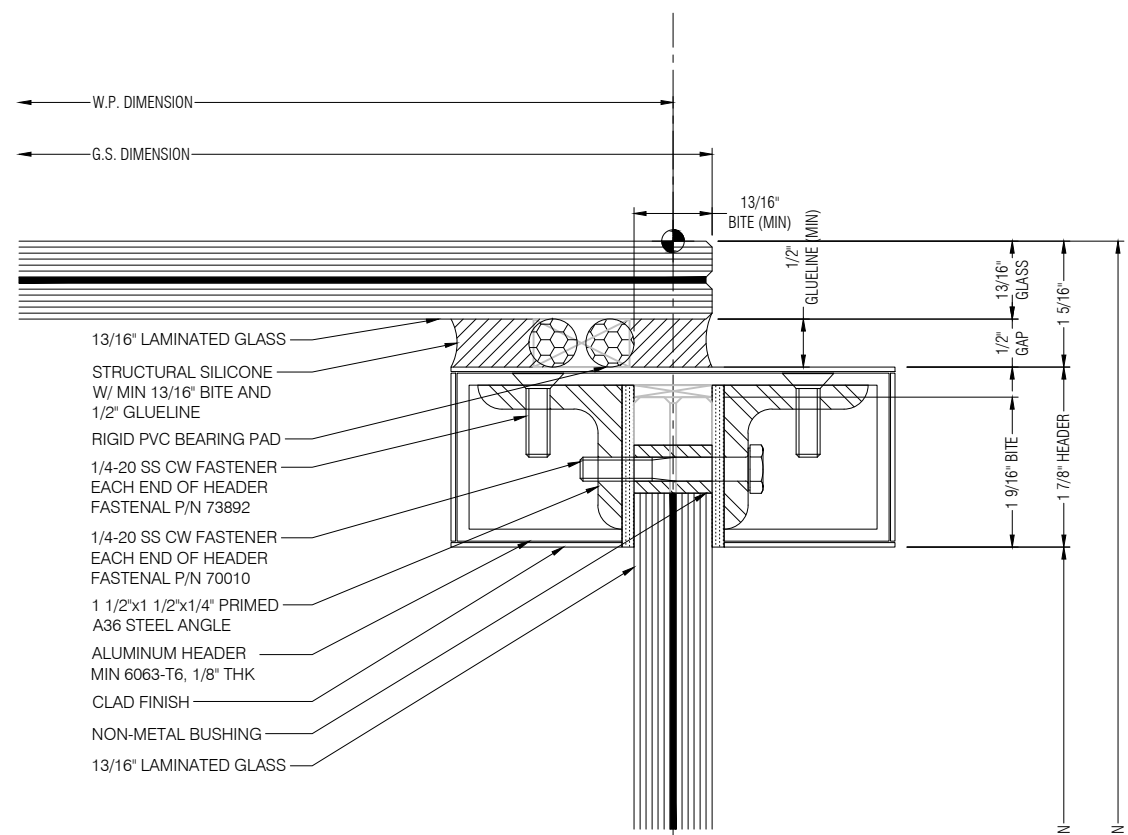
SHEET:

D1

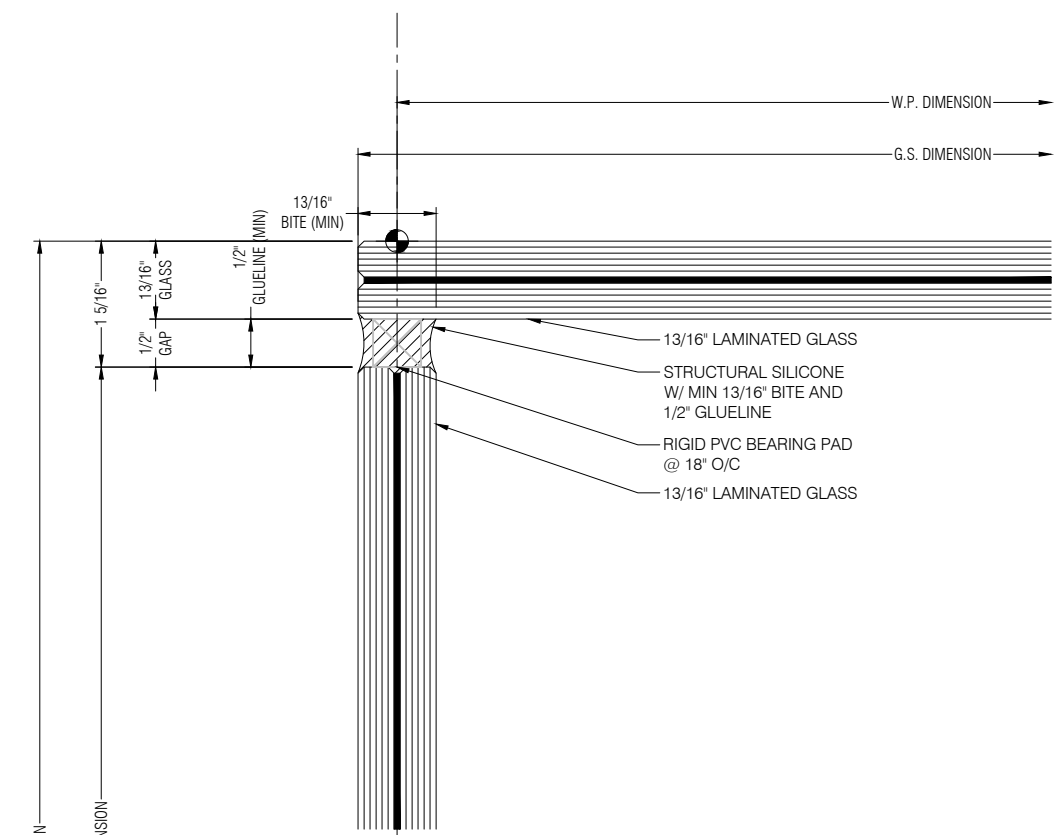


**GLASS+
METAL
CRAFT**

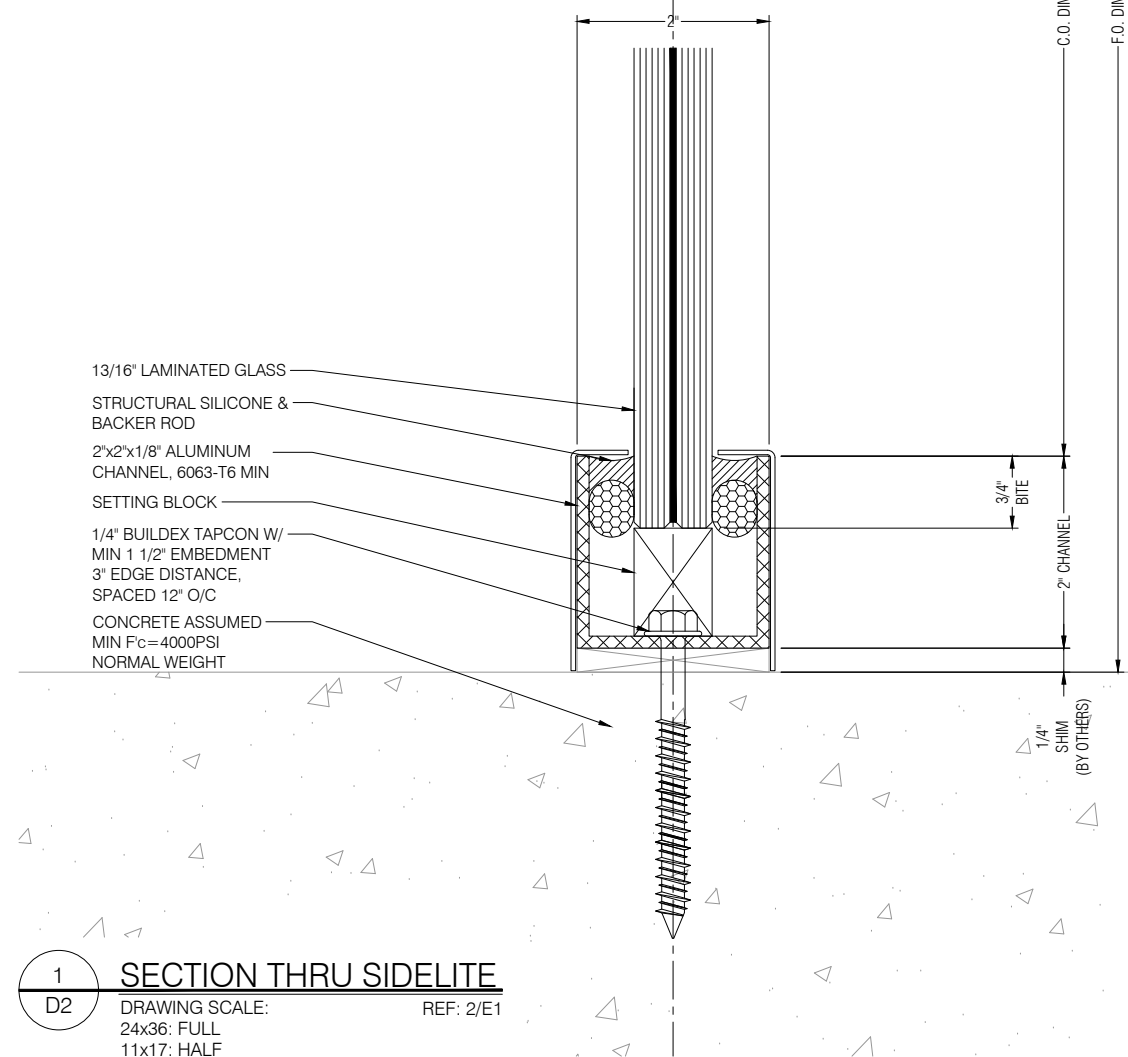
PROPRIETARY NOTICE:
THIS DRAWING SHEET AND CONTENTS HEREIN ARE PROPERTY OF GLASS AND METAL CRAFT AND ITS CUSTOMERS. USE OF THESE DRAWINGS, ITS CONTENT AND DESIGN CONCEPTS ARE INTENDED FOR THE USE OF THE INTENDED RECIPIENT. GLASS AND METAL CRAFT AND ITS CUSTOMERS ARE NOT RESPONSIBLE FOR USE BY OTHER PARTIES.



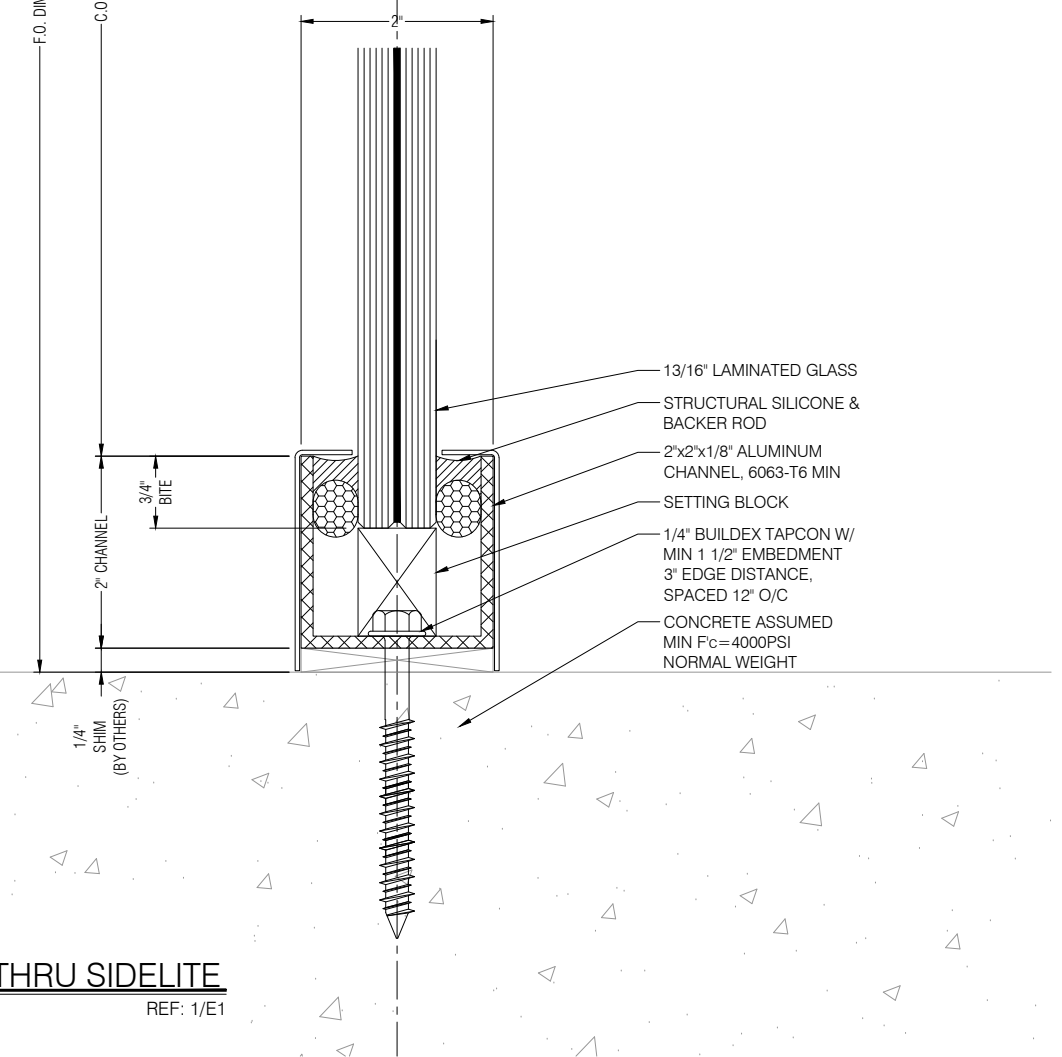
- 13/16" LAMINATED GLASS
- STRUCTURAL SILICONE W/ MIN 13/16" BITE AND 1/2" GLUELINE
- RIGID PVC BEARING PAD
- 1/4-20 SS CW FASTENER EACH END OF HEADER FASTENAL P/N 73892
- 1/4-20 SS CW FASTENER EACH END OF HEADER FASTENAL P/N 70010
- 1 1/2"x1 1/2"x1/4" PRIMED A36 STEEL ANGLE
- ALUMINUM HEADER MIN 6063-T6, 1/8" THK
- CLAD FINISH
- NON-METAL BUSHING
- 13/16" LAMINATED GLASS



- 13/16" LAMINATED GLASS
- STRUCTURAL SILICONE W/ MIN 13/16" BITE AND 1/2" GLUELINE
- RIGID PVC BEARING PAD @ 18" O/C
- 13/16" LAMINATED GLASS



- 13/16" LAMINATED GLASS
- STRUCTURAL SILICONE & BACKER ROD
- 2"x2"x1/8" ALUMINUM CHANNEL, 6063-T6 MIN
- SETTING BLOCK
- 1/4" BUILDDEX TAPCON W/ MIN 1 1/2" EMBEDMENT 3" EDGE DISTANCE, SPACED 12" O/C
- CONCRETE ASSUMED MIN F_c=4000PSI NORMAL WEIGHT



- 13/16" LAMINATED GLASS
- STRUCTURAL SILICONE & BACKER ROD
- 2"x2"x1/8" ALUMINUM CHANNEL, 6063-T6 MIN
- SETTING BLOCK
- 1/4" BUILDDEX TAPCON W/ MIN 1 1/2" EMBEDMENT 3" EDGE DISTANCE, SPACED 12" O/C
- CONCRETE ASSUMED MIN F_c=4000PSI NORMAL WEIGHT

SUBMITTED FOR PRELIMINARY REVIEW. FOR DESIGN REPRESENTATION ONLY. THIS SUBMITTAL HAS NOT BEEN ENGINEERED TO ACCOMMODATE SITE-SPECIFIC CONDITIONS FOR THIS SYSTEM.

REVISION	DATE
SI	XX.XX.XX
1	-
2	-
3	-
4	-

DRAWN BY: AL DATE: XX.XX.XX

ARCHITECT: ARCHITECTURE FIRM NAME

GMC SYSTEM TYPE:

OSTIUM VESTIBULES - TYPE 1

PROJECT NAME:

PROJECT NAME

SHEET DESCRIPTION:

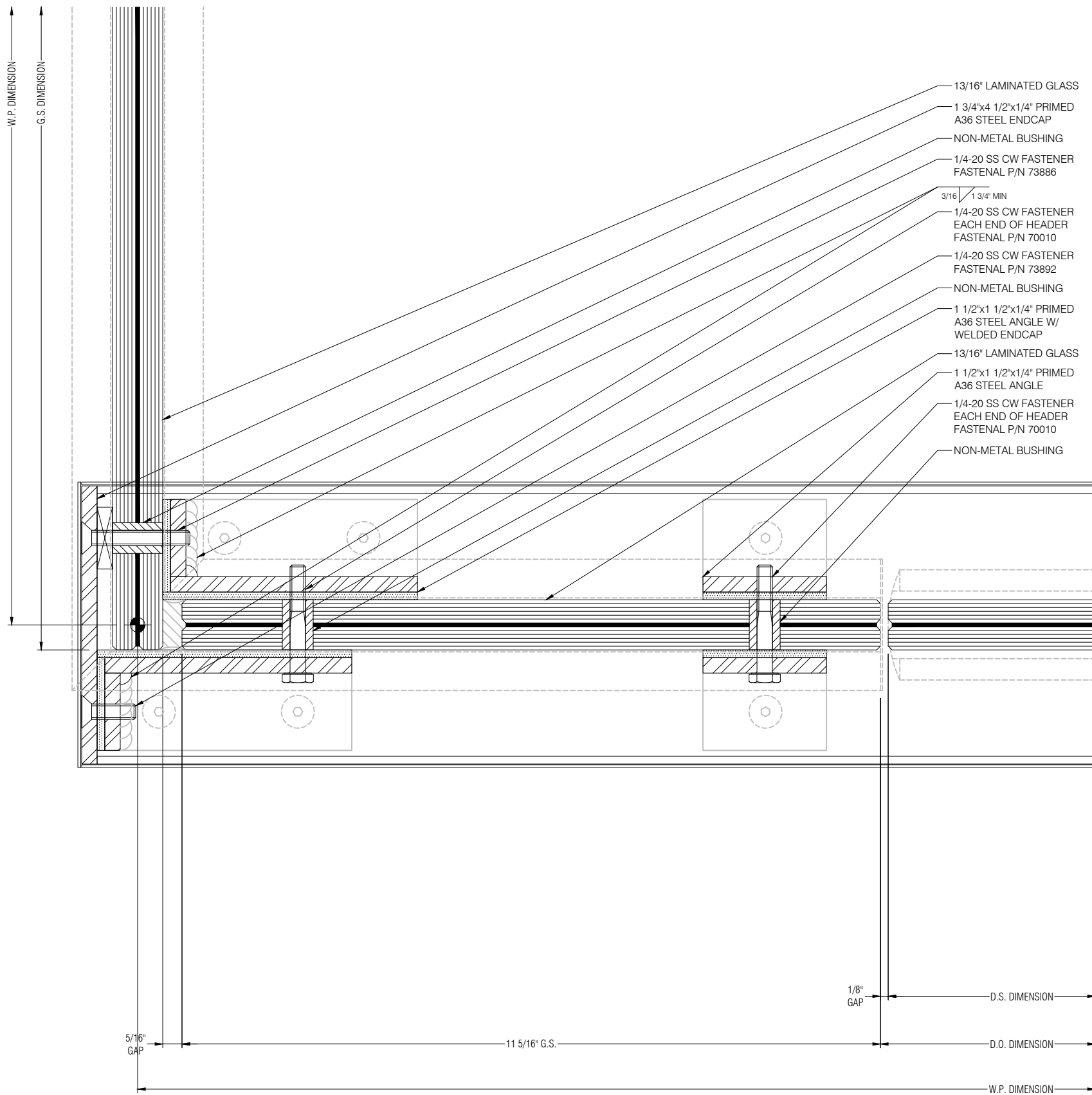
DETAILS

SHEET:

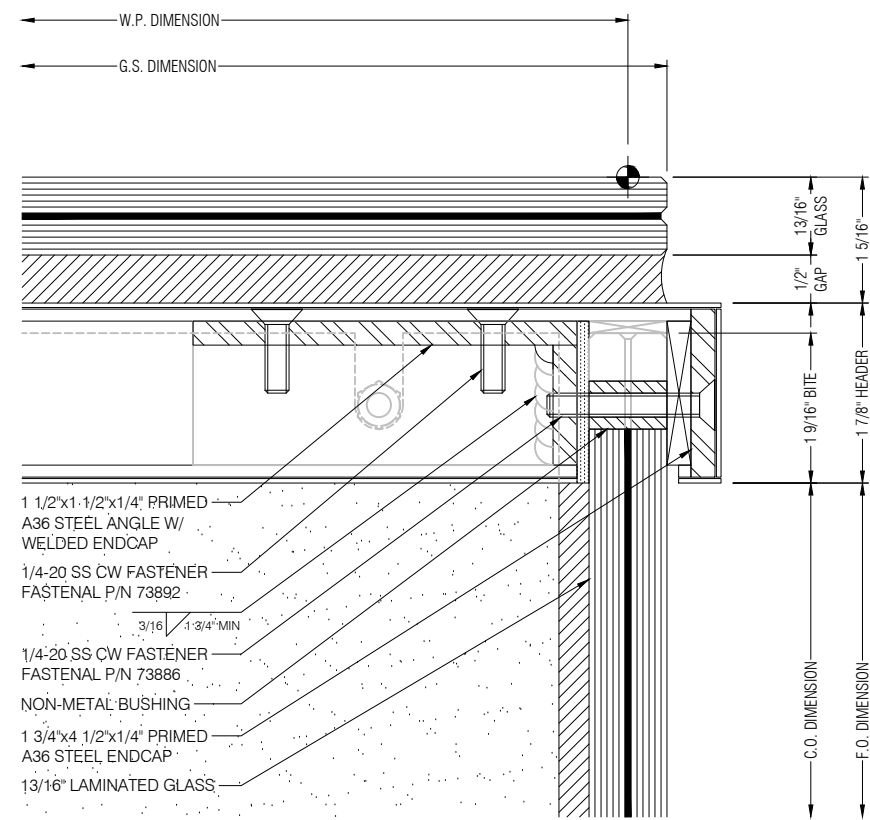
D2

1 SECTION THRU SIDELITE
D2 DRAWING SCALE: 24x36: FULL 11x17: HALF REF: 2/E1

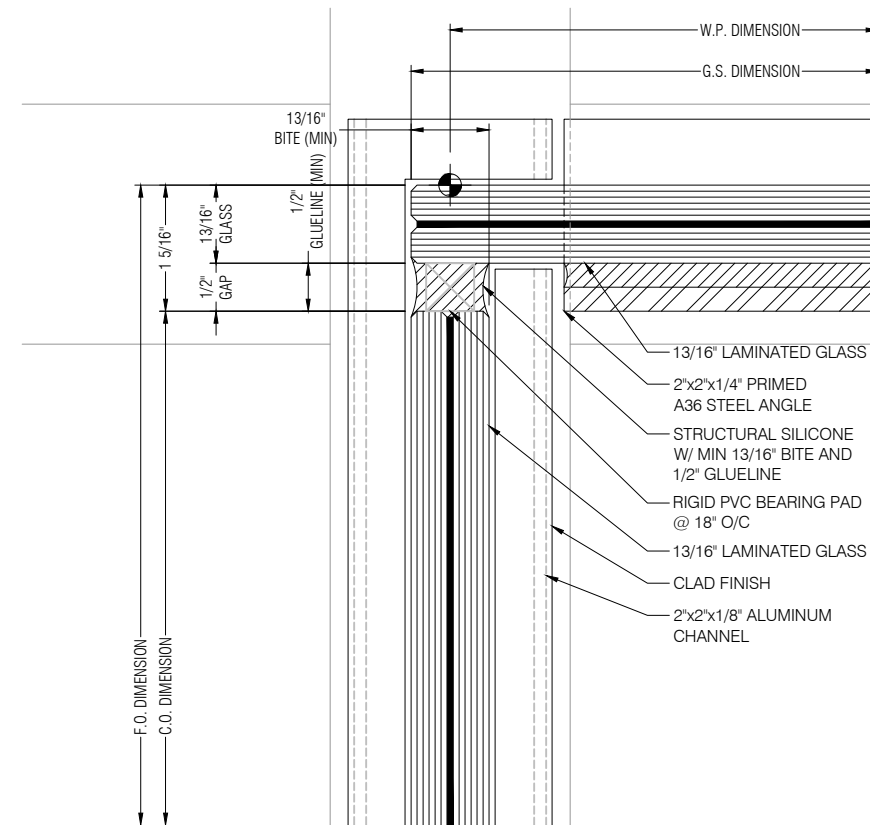
2 SECTION THRU SIDELITE
D2 DRAWING SCALE: 24x36: FULL 11x17: HALF REF: 1/E1



1 HEADER CONNECTION TO SIDELITE
 D3 DRAWING SCALE:
 24x36: FULL
 11x17: HALF
 REF: 1/E1



2 HEADER CONNECTION TO SIDELITE
 D3 DRAWING SCALE:
 24x36: FULL
 11x17: HALF
 REF: 1/E1



3 SECTION AT EXTERIOR ROOF/SIDELITE
 D3 DRAWING SCALE:
 24x36: FULL
 11x17: HALF
 REF: 1/E1



PROPRIETARY NOTICE:
 THIS DRAWING SHEET AND CONTENTS HEREIN ARE PROPERTY OF GLASS AND METAL CRAFT AND ITS CUSTOMERS. USE OF THESE DRAWINGS, ITS CONTENT AND DESIGN CONCEPTS ARE INTENDED FOR THE USE OF THE INTENDED RECIPIENT. GLASS AND METAL CRAFT AND ITS CUSTOMERS ARE NOT RESPONSIBLE FOR USE BY OTHER PARTIES.

SUBMITTED FOR PRELIMINARY REVIEW. FOR DESIGN REPRESENTATION ONLY. THIS SUBMITTAL HAS NOT BEEN ENGINEERED TO ACCOMMODATE SITE-SPECIFIC CONDITIONS FOR THIS SYSTEM.

REVISION	DATE
SI	XX.XX.XX
1	-
2	-
3	-
4	-

DRAWN BY: AL DATE: XX.XX.XX

ARCHITECT:
ARCHITECTURE FIRM NAME

GMC SYSTEM TYPE:
OSTIUM VESTIBULES - TYPE 1

PROJECT NAME:
PROJECT NAME

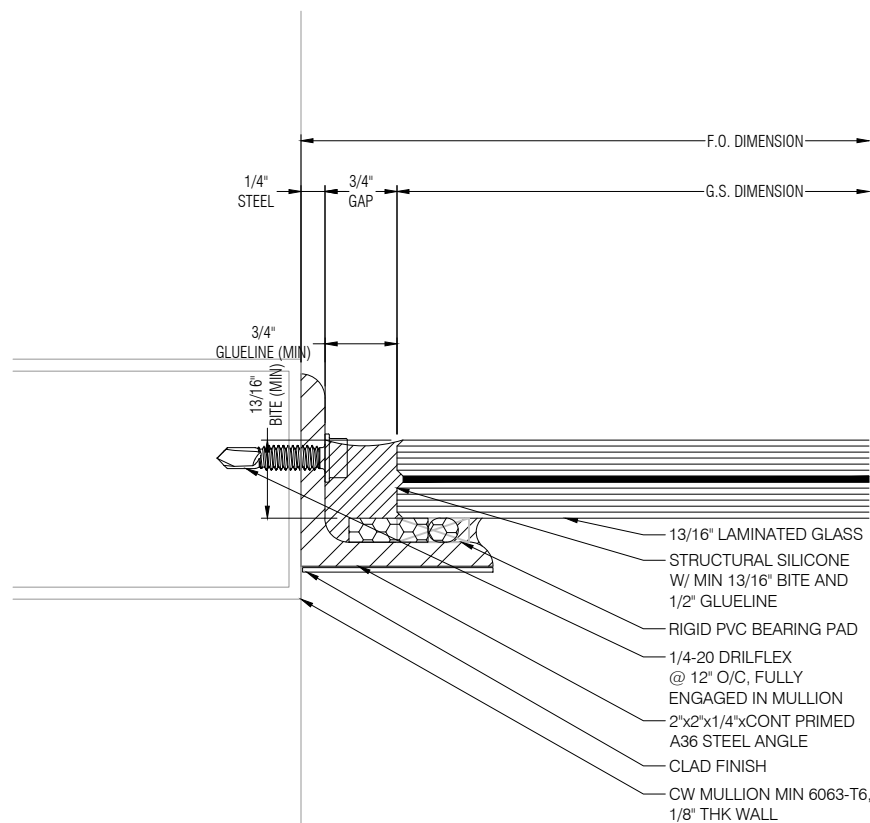
SHEET DESCRIPTION:
DETAILS

SHEET:
D3



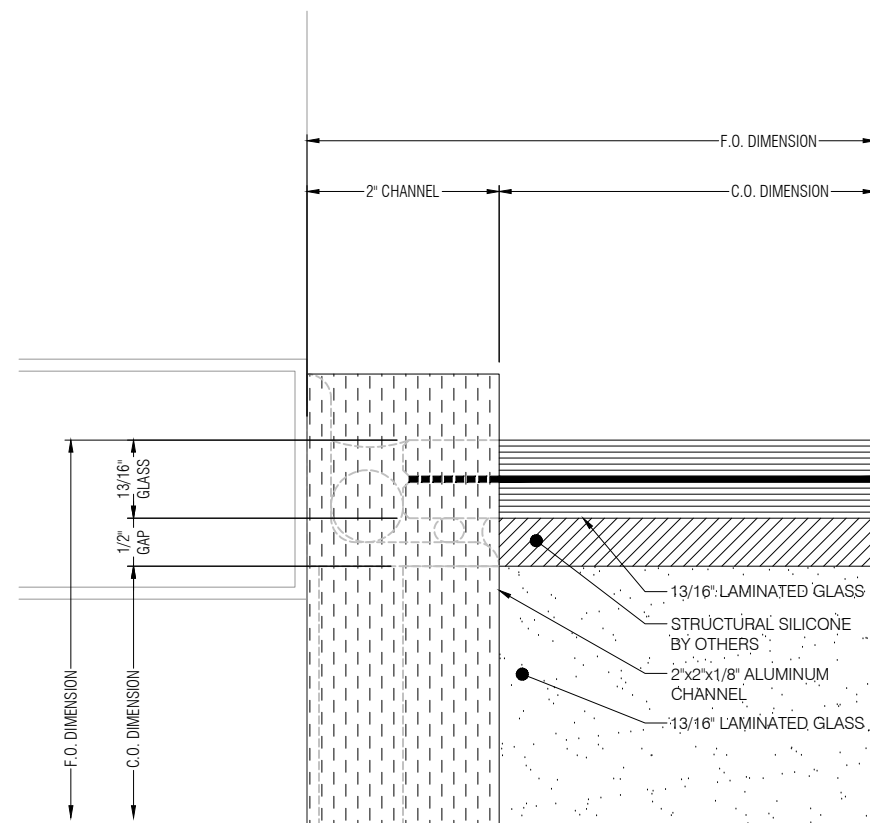
**GLASS+
METAL
CRAFT**

PROPRIETARY NOTICE:
THIS DRAWING SHEET AND CONTENTS HEREIN ARE PROPERTY OF GLASS AND METAL CRAFT AND ITS CUSTOMERS. USE OF THESE DRAWINGS, ITS CONTENT AND DESIGN CONCEPTS ARE INTENDED FOR THE USE OF THE INTENDED RECIPIENT. GLASS AND METAL CRAFT AND ITS CUSTOMERS ARE NOT RESPONSIBLE FOR USE BY OTHER PARTIES.



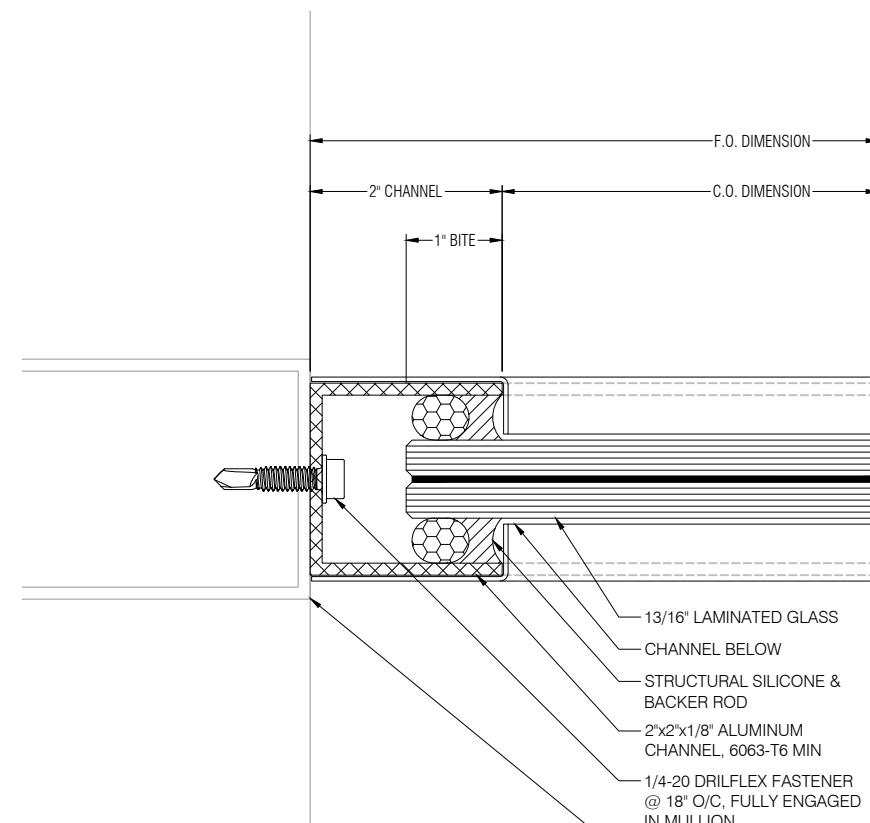
1 ROOF CONNECTION TO CURTAIN WALL

D4 DRAWING SCALE: REF: 2/P1
24x36: FULL
11x17: HALF



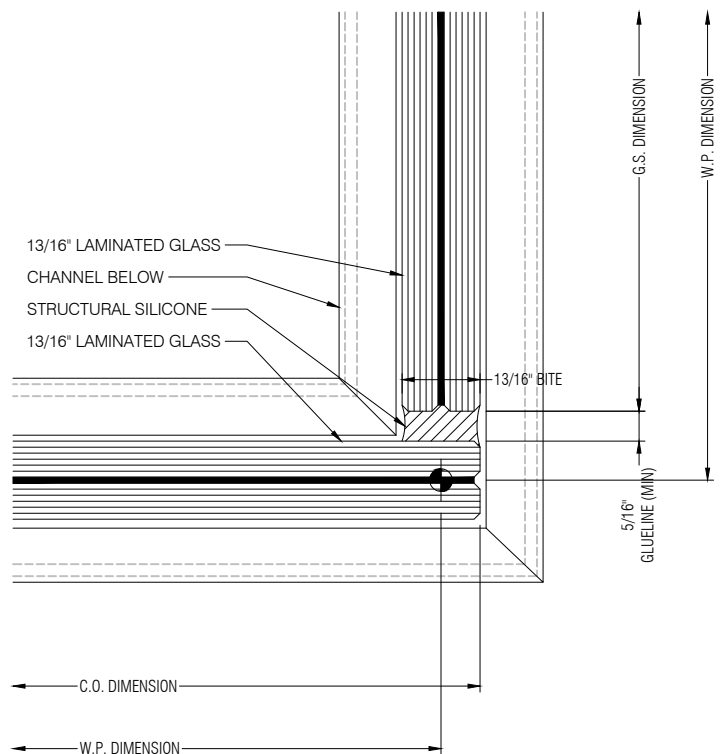
2 EXTERIOR ROOF & SIDELITE INTERFACE

D4 DRAWING SCALE: REF: 1/E1
24x36: FULL
11x17: HALF



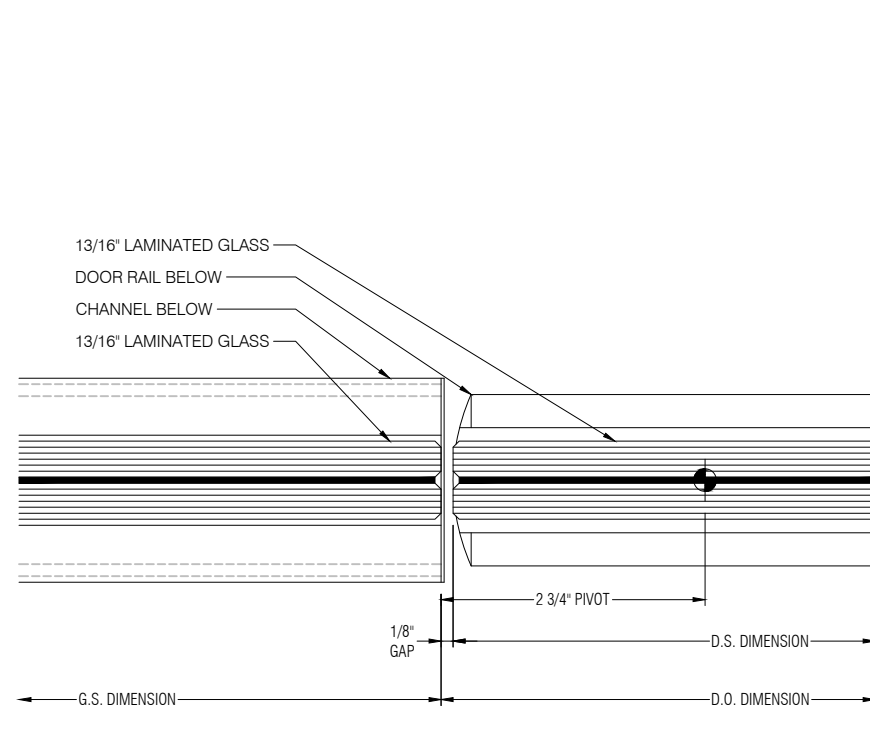
3 F.O. TO SIDELITE

D4 DRAWING SCALE: REF: 1/E1
24x36: FULL
11x17: HALF



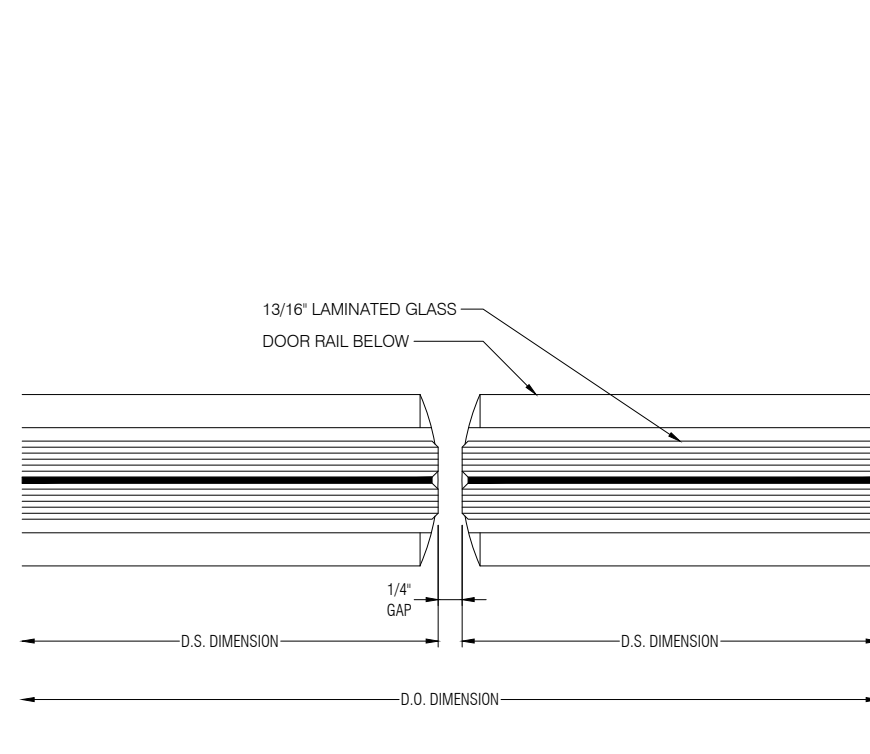
4 90° GLASS JOINT

D4 DRAWING SCALE: REF: 1/E1
24x36: FULL
11x17: HALF



5 SIDELITE TO PIVOT

D4 DRAWING SCALE: REF: 2/E1
24x36: FULL
11x17: HALF



6 STRIKE TO STRIKE

D4 DRAWING SCALE: REF: 2/E1
24x36: FULL
11x17: HALF

SUBMITTED FOR PRELIMINARY REVIEW. FOR DESIGN REPRESENTATION ONLY. THIS SUBMITTAL HAS NOT BEEN ENGINEERED TO ACCOMMODATE SITE-SPECIFIC CONDITIONS FOR THIS SYSTEM.

REVISION	DATE
SI 1	XX.XX.XX
2	-
3	-
4	-

DRAWN BY: AL DATE: XX.XX.XX

ARCHITECT: ARCHITECTURE FIRM NAME

GMC SYSTEM TYPE: OSTIUM VESTIBULES - TYPE 1

PROJECT NAME: PROJECT NAME

SHEET DESCRIPTION: DETAILS

SHEET: D4