

OSTIUM VESTIBULES - TYPE 3

PRE-ENGINEERED ARCHITECTURAL SYSTEMS

ARCHITECT:

ARCH. NAME

ARCH. ADDRESS 1
ARCH. ADDRESS 2
ARCH. CONTACT #

GLASS + METAL
CRAFT

48230 WEST ROAD
WIXOM, MI 48393
P. 248.624.5050
F. 248.624.6988



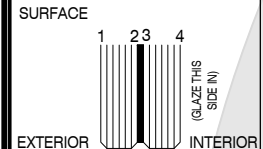
GLAZING SCHEDULE

SYSTEM NOTES

DESIGN CRITERIA

SUBMITTAL LOG

TYPE: GL-1 (GL-1) 13/16" LAMINATED GLASS
 MAKEUP: 1/8" TEMPERED GLASS
 0.060" CLEAR SGP INTERLAYER
 1/8" TEMPERED GLASS
 NOTES:
 EXPOSED EDGES TO BE FLAT POLISHED
 LAMINATED LOGO: NO LOGO:
 *TEMPERING LOGO AVAILABLE UPON REQUEST



1	PROPOSAL / PROGRESS REVIEW SUBMITTAL	XX.XX.XX	AL
2			
3			
4			
5			
6			

PROPRIETARY NOTICE:
 THIS DRAWING SHEET AND CONTENTS HEREIN
 ARE PROPERTY OF GLASS AND METAL CRAFT
 AND ITS CUSTOMERS. USE OF THESE DRAWINGS,
 ITS CONTENT AND DESIGN CONCEPTS ARE
 INTENDED FOR THE USE OF THE INTENDED
 RECIPIENT. GLASS AND METAL CRAFT AND ITS
 CUSTOMERS ARE NOT RESPONSIBLE FOR USE BY
 OTHER PARTIES.

METAL FINISH

SHEET INDEX

C1	COVER SHEET
P1A THRU P1B	PLAN VIEWS
E1A THRU E1B	ELEVATIONS
D1 THRU D9	DETAILS

SUBMITTED FOR
 PRELIMINARY REVIEW. FOR
 DESIGN REPRESENTATION
 ONLY. THIS SUBMITTAL HAS
 NOT BEEN ENGINEERED TO
 ACCOMMODATE
 SITE-SPECIFIC CONDITIONS
 FOR THIS SYSTEM.

REVISION	DATE
SI	XX.XX.XX
1	-
2	-
3	-
4	-
DRAWN BY:	DATE:
AL	XX.XX.XX

ABBREVIATIONS

GLASS GLASS ORIENTATION	(E1-1A) GLASS TAG
WORKPOINT	(GL-1) GLASS GL TYPE
F.O. - FINISH OPENING	W.P. - WORK POINT
R.O. - ROUGH OPENING	F.F. - FINISH FLOOR
C.O. - CLEAR OPENING	V.I.F. - VERIFY IN FIELD
D.O. - DOOR OPENING	O.H. - OPPOSITE HAND
G.S. - GLASS SIZE	SIM. - SIMILAR
D.S. - DOOR SIZE	EQ. - EQUAL
E.O.G. - EDGE OF GLASS	☉ - CENTERLINE

ARCHITECT:
 ARCHITECTURE FIRM NAME
 GMC SYSTEM TYPE:
 OSTIUM VESTIBULES - TYPE 3
 PROJECT NAME:
 PROJECT NAME

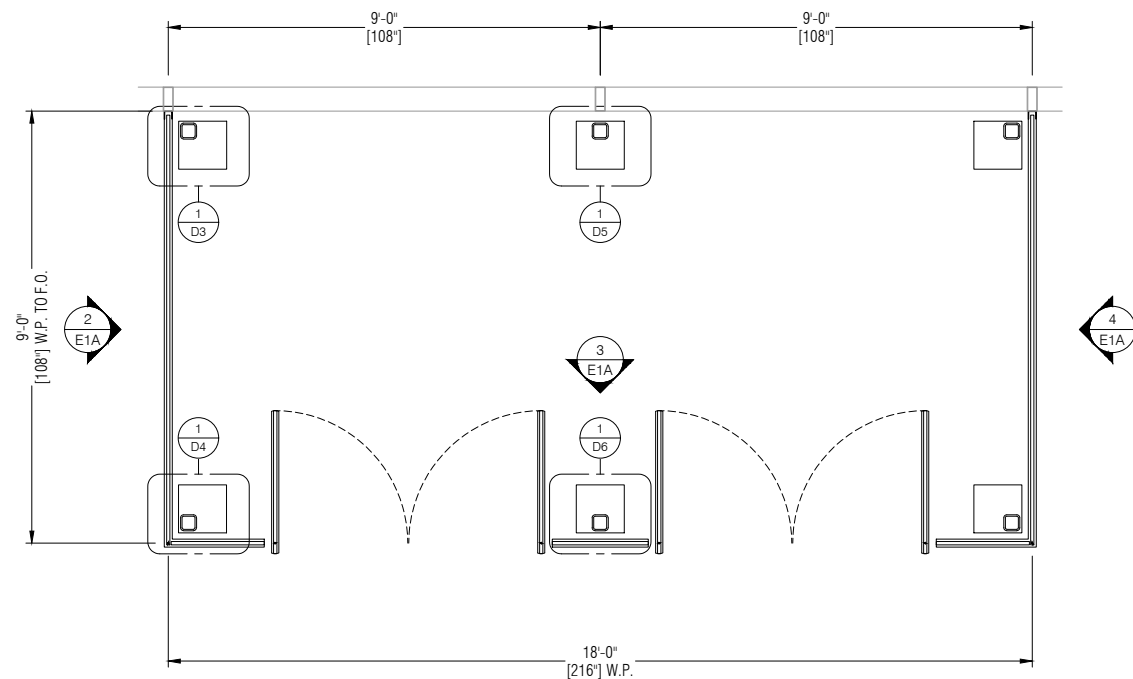
SHEET DESCRIPTION:
COVER SHEET

SHEET:
C1



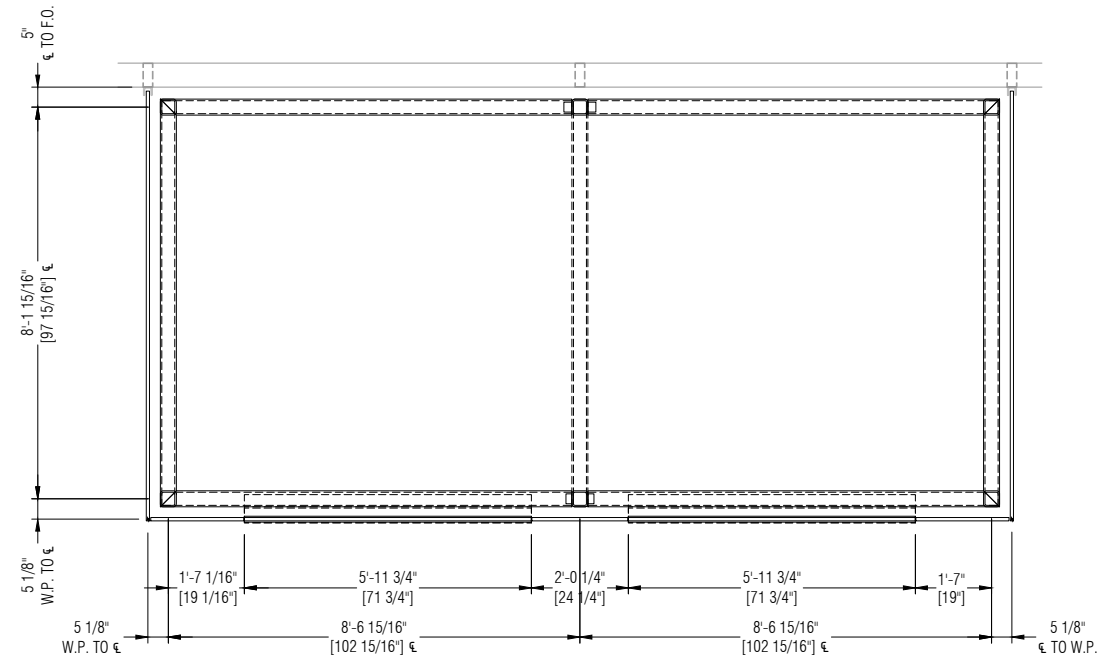
**GLASS+
METAL
CRAFT**

PROPRIETARY NOTICE:
THIS DRAWING SHEET AND CONTENTS HEREIN ARE PROPERTY OF GLASS AND METAL CRAFT AND ITS CUSTOMERS. USE OF THESE DRAWINGS, ITS CONTENT AND DESIGN CONCEPTS ARE INTENDED FOR THE USE OF THE INTENDED RECIPIENT. GLASS AND METAL CRAFT AND ITS CUSTOMERS ARE NOT RESPONSIBLE FOR USE BY OTHER PARTIES.



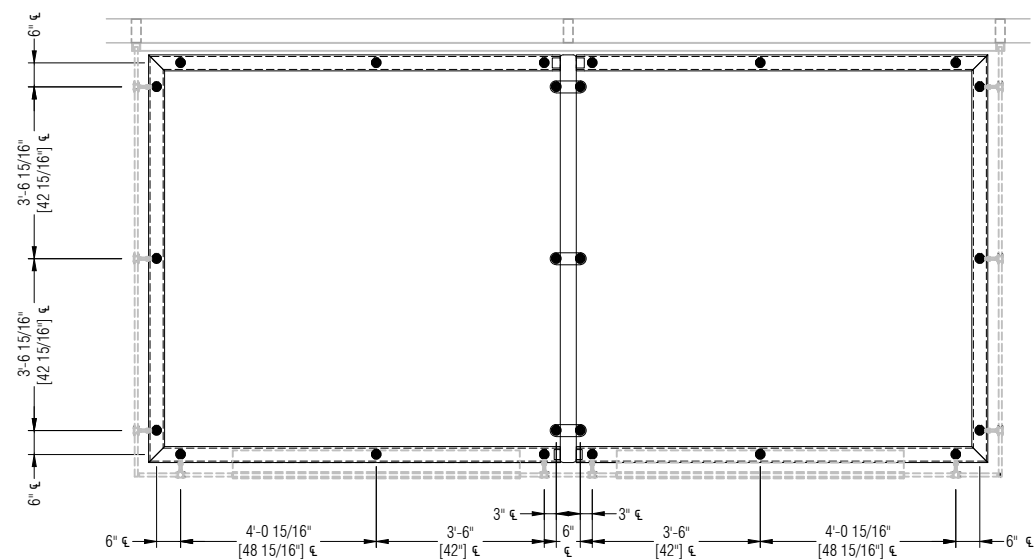
1 VESTIBULE 3 FLOOR PLAN

DRAWING SCALE:
24x36: 1/2" = 1'-0"
11x17: 1/4" = 1'-0"



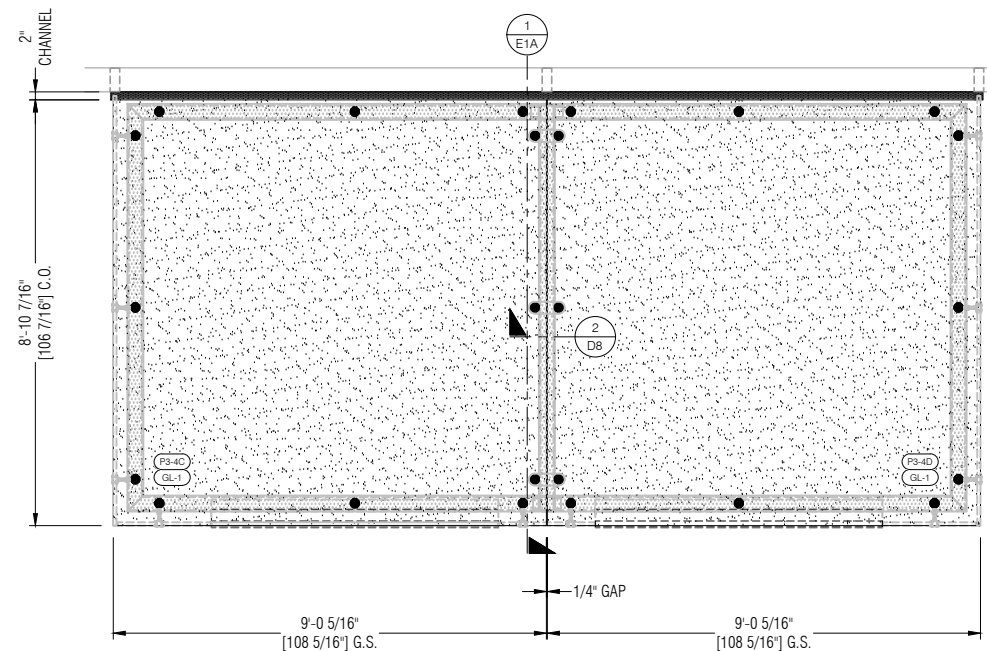
2 VESTIBULE 3 STEEL PLAN

DRAWING SCALE:
24x36: 1/2" = 1'-0"
11x17: 1/4" = 1'-0"



3 VESTIBULE 3 FITTING PLAN

DRAWING SCALE:
24x36: 1/2" = 1'-0"
11x17: 1/4" = 1'-0"



4 VESTIBULE 3 ROOF PLAN

DRAWING SCALE:
24x36: 1/2" = 1'-0"
11x17: 1/4" = 1'-0"

SUBMITTED FOR
PRELIMINARY REVIEW. FOR
DESIGN REPRESENTATION
ONLY. THIS SUBMITTAL HAS
NOT BEEN ENGINEERED TO
ACCOMMODATE
SITE-SPECIFIC CONDITIONS
FOR THIS SYSTEM.

REVISION	DATE
SI	XX.XX.XX
1	-
2	-
3	-
4	-

DRAWN BY: AL DATE: XX.XX.XX

ARCHITECT:
ARCHITECTURE FIRM NAME

GMC SYSTEM TYPE:
OSTIUM VESTIBULES - TYPE 3

PROJECT NAME:
PROJECT NAME

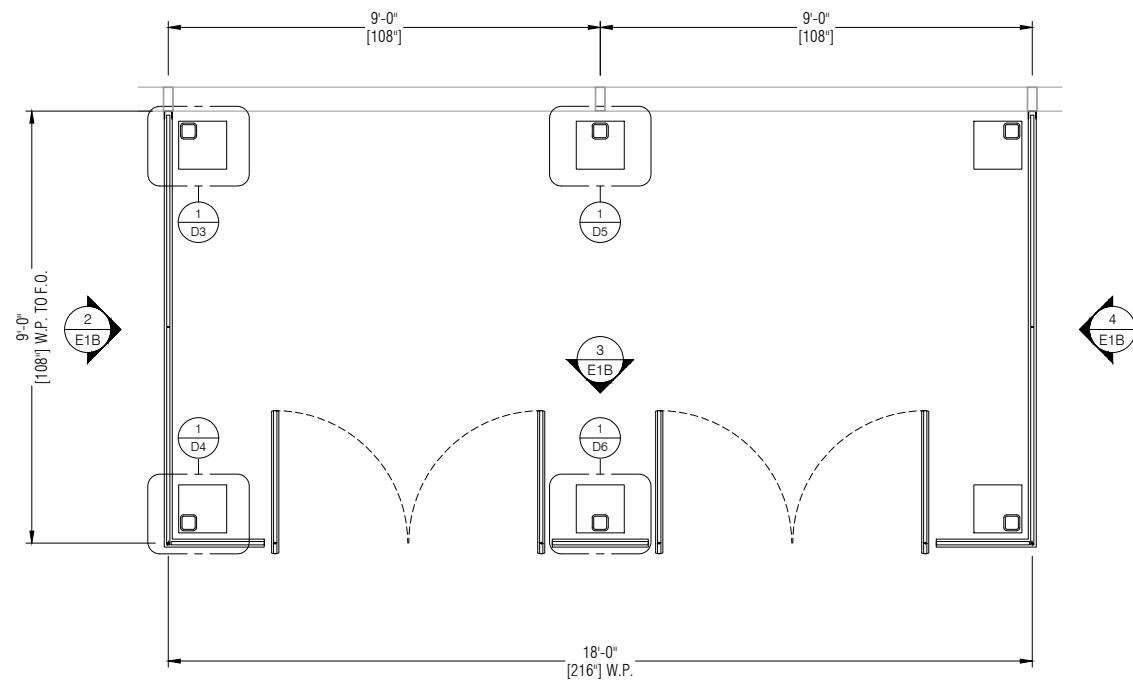
SHEET DESCRIPTION:
PLANS

SHEET:
P1A

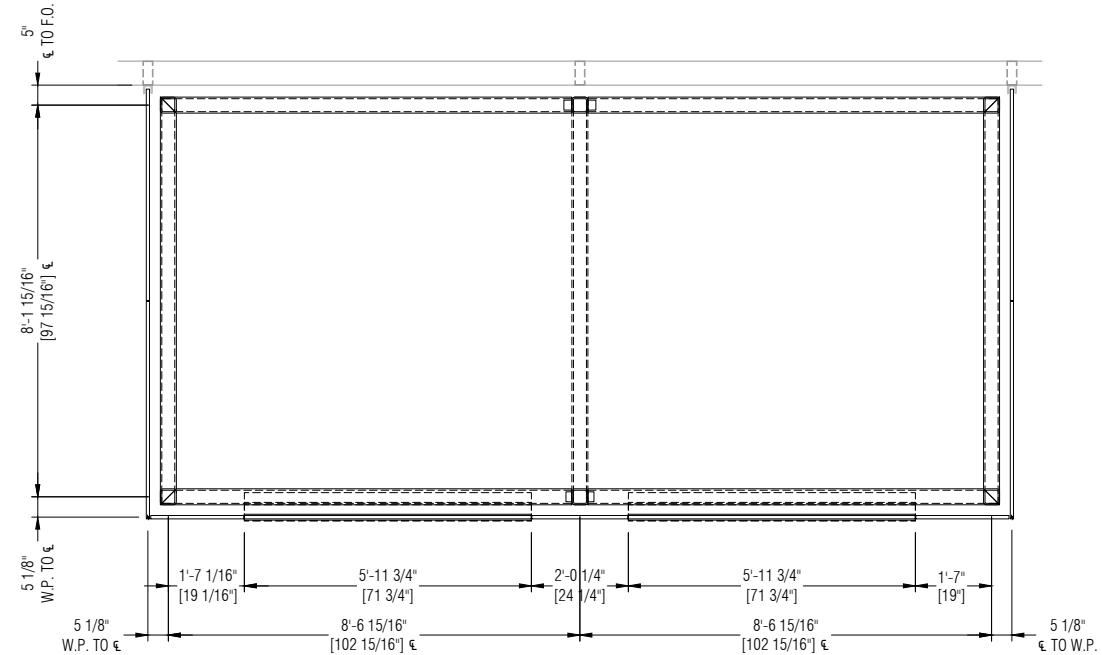


**GLASS+
METAL
CRAFT**

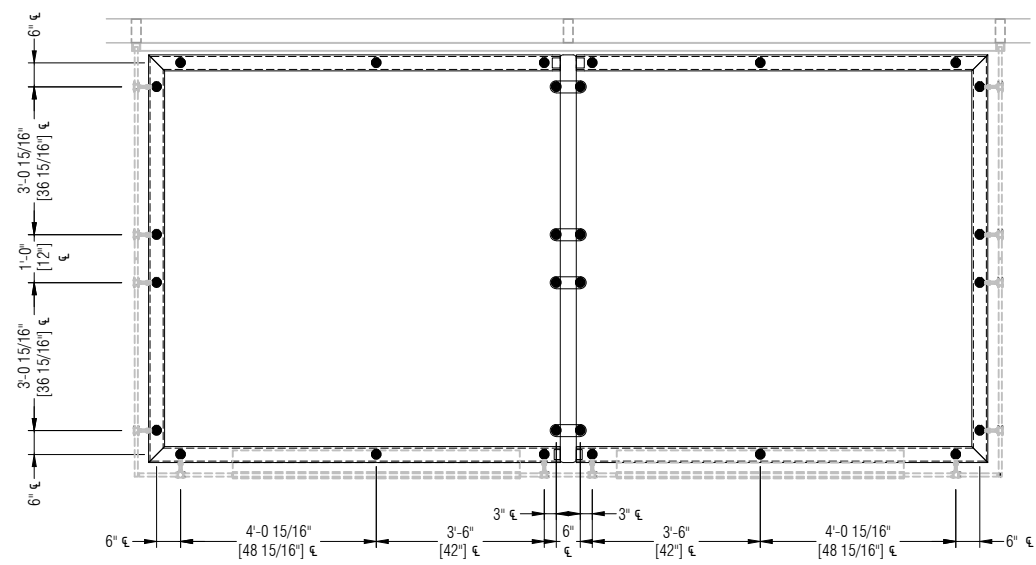
PROPRIETARY NOTICE:
THIS DRAWING SHEET AND CONTENTS HEREIN ARE PROPERTY OF GLASS AND METAL CRAFT AND ITS CUSTOMERS. USE OF THESE DRAWINGS, ITS CONTENT AND DESIGN CONCEPTS ARE INTENDED FOR THE USE OF THE INTENDED RECIPIENT. GLASS AND METAL CRAFT AND ITS CUSTOMERS ARE NOT RESPONSIBLE FOR USE BY OTHER PARTIES.



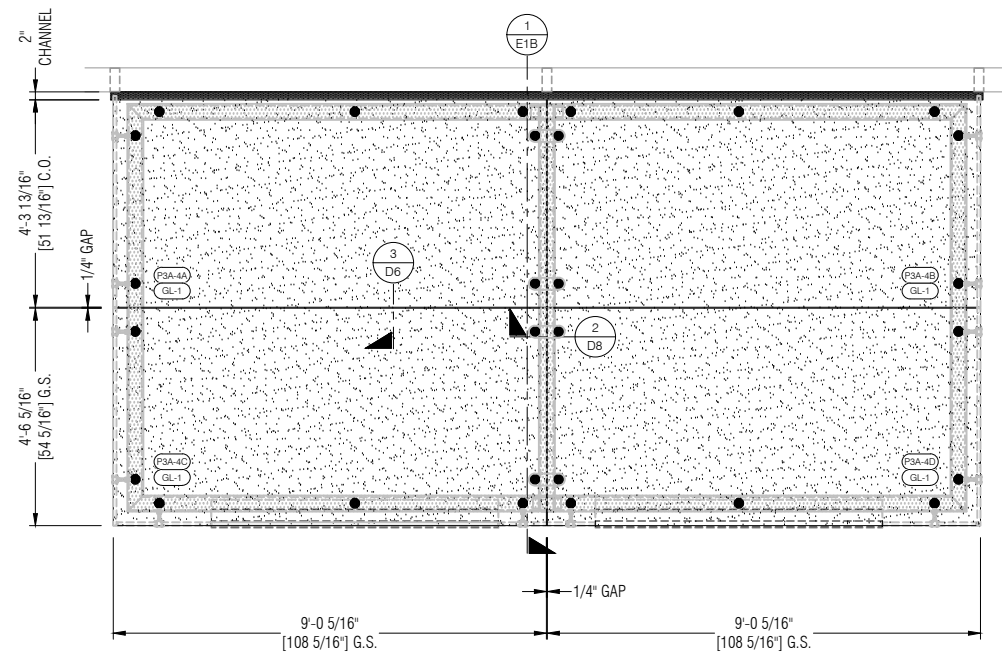
1 VESTIBULE 3 FLOOR PLAN
DRAWING SCALE:
24x36: 1/2" = 1'-0"
11x17: 1/4" = 1'-0"



2 VESTIBULE 3 STEEL PLAN
DRAWING SCALE:
24x36: 1/2" = 1'-0"
11x17: 1/4" = 1'-0"



3 VESTIBULE 3 FITTING PLAN
DRAWING SCALE:
24x36: 1/2" = 1'-0"
11x17: 1/4" = 1'-0"



4 VESTIBULE 3 ROOF PLAN
DRAWING SCALE:
24x36: 1/2" = 1'-0"
11x17: 1/4" = 1'-0"

SUBMITTED FOR PRELIMINARY REVIEW. FOR DESIGN REPRESENTATION ONLY. THIS SUBMITTAL HAS NOT BEEN ENGINEERED TO ACCOMMODATE SITE-SPECIFIC CONDITIONS FOR THIS SYSTEM.

REVISION	DATE
SI	XX.XX.XX
1	-
2	-
3	-
4	-

DRAWN BY: AL DATE: XX.XX.XX

ARCHITECT: ARCHITECTURE FIRM NAME

GMC SYSTEM TYPE: OSTIUM VESTIBULES - TYPE 3

PROJECT NAME: PROJECT NAME

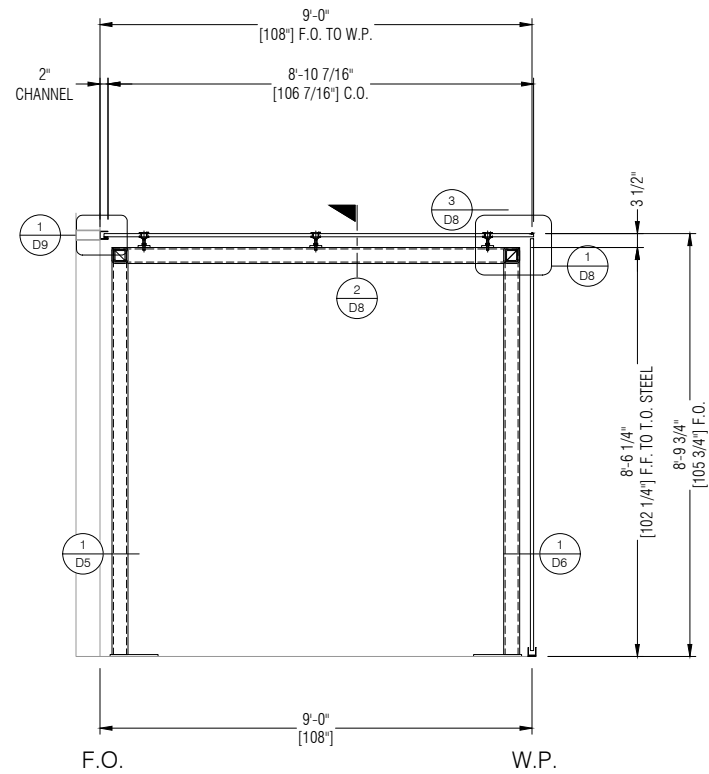
SHEET DESCRIPTION: PLANS

SHEET: **P1B**

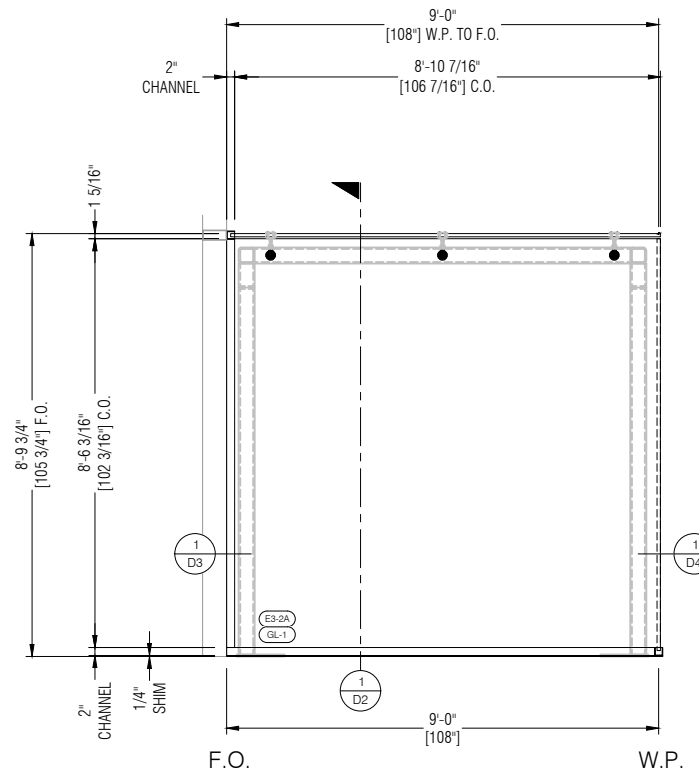


**GLASS+
METAL
CRAFT**

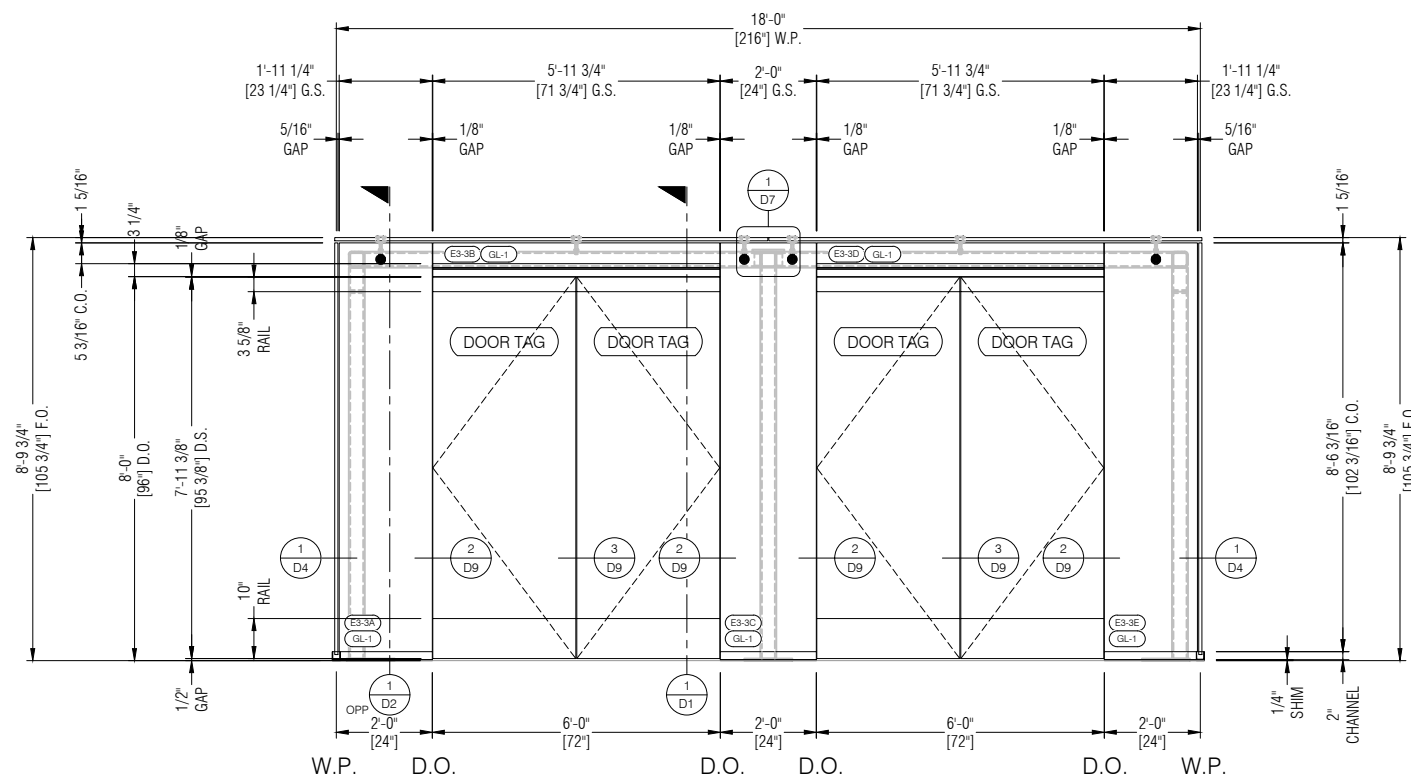
PROPRIETARY NOTICE:
THIS DRAWING SHEET AND CONTENTS HEREIN ARE PROPERTY OF GLASS AND METAL CRAFT AND ITS CUSTOMERS. USE OF THESE DRAWINGS, ITS CONTENT AND DESIGN CONCEPTS ARE INTENDED FOR THE USE OF THE INTENDED RECIPIENT. GLASS AND METAL CRAFT AND ITS CUSTOMERS ARE NOT RESPONSIBLE FOR USE BY OTHER PARTIES.



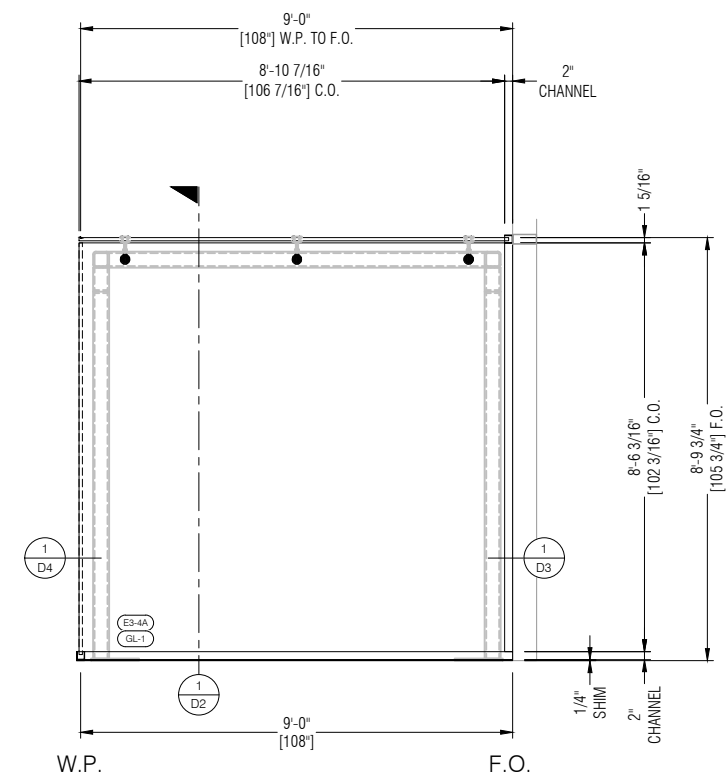
1 SECTION THRU VESTIBULE 3
E1A DRAWING SCALE: 24x36: 1/2" = 1'-0"
11x17: 1/4" = 1'-0" REF: 4/P1A



2 ELEVATION AT RETURN
E1A DRAWING SCALE: 24x36: 1/2" = 1'-0"
11x17: 1/4" = 1'-0" REF: 1/P1A



3 ELEVATION AT VESTIBULE 3
E1A DRAWING SCALE: 24x36: 1/2" = 1'-0"
11x17: 1/4" = 1'-0" REF: 1/P1A



4 ELEVATION AT RETURN
E1A DRAWING SCALE: 24x36: 1/2" = 1'-0"
11x17: 1/4" = 1'-0" REF: 1/P1A

SUBMITTED FOR
PRELIMINARY REVIEW. FOR
DESIGN REPRESENTATION
ONLY. THIS SUBMITTAL HAS
NOT BEEN ENGINEERED TO
ACCOMMODATE
SITE-SPECIFIC CONDITIONS
FOR THIS SYSTEM.

REVISION	DATE
SI	XX.XX.XX
1	-
2	-
3	-
4	-

DRAWN BY: AL DATE: XX.XX.XX

ARCHITECT: ARCHITECTURE FIRM NAME

GMC SYSTEM TYPE: OSTIUM VESTIBULES - TYPE 3

PROJECT NAME: PROJECT NAME

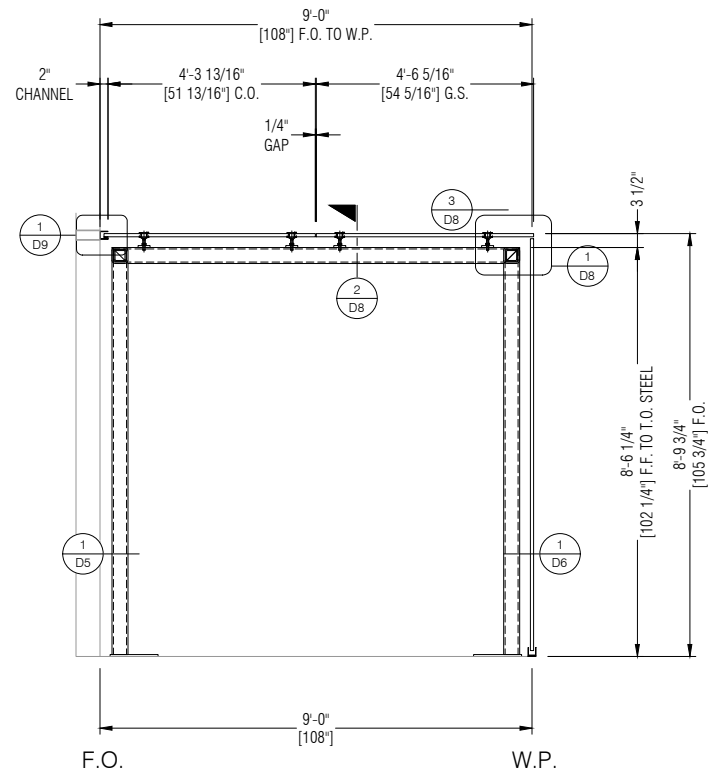
SHEET DESCRIPTION: ELEVATIONS

SHEET: **E1A**

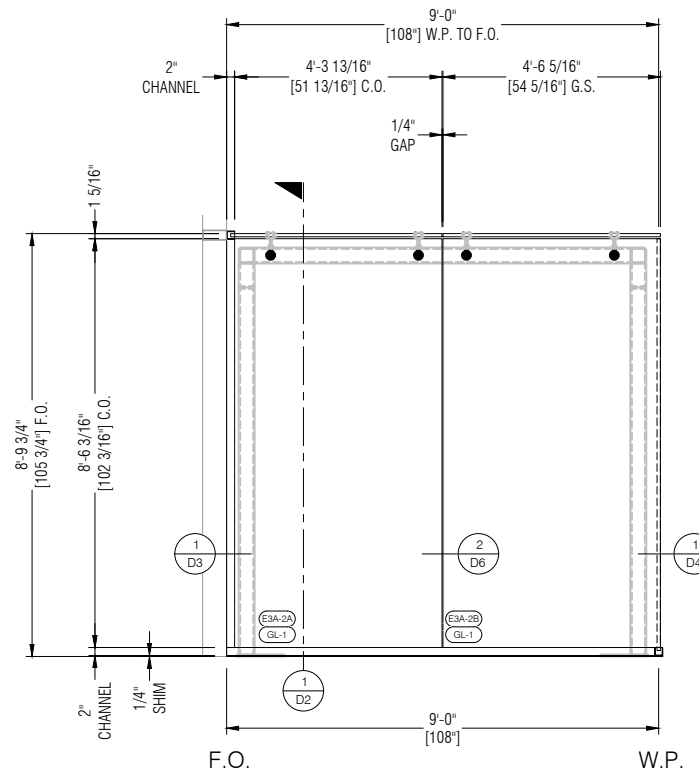


**GLASS+
METAL
CRAFT**

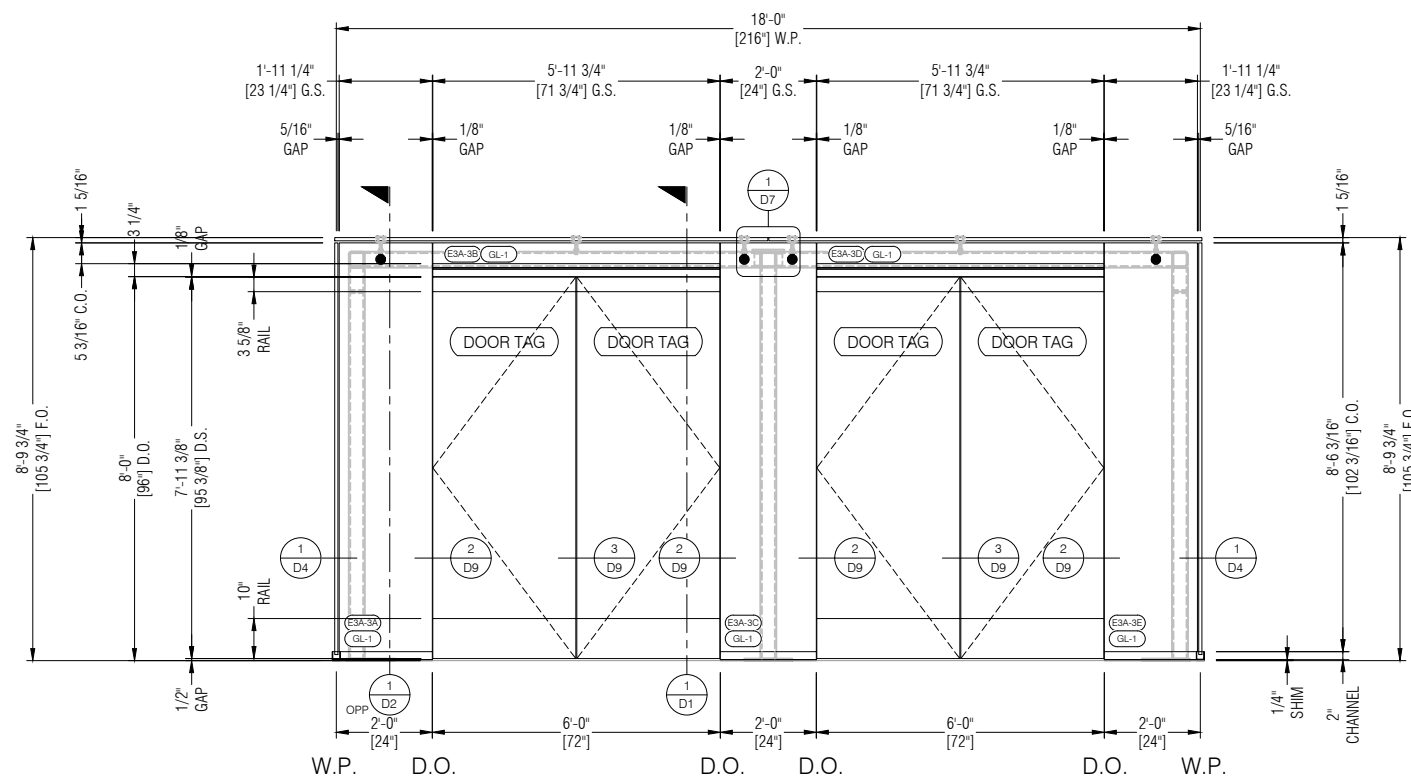
PROPRIETARY NOTICE:
THIS DRAWING SHEET AND CONTENTS HEREIN ARE PROPERTY OF GLASS AND METAL CRAFT AND ITS CUSTOMERS. USE OF THESE DRAWINGS, ITS CONTENT AND DESIGN CONCEPTS ARE INTENDED FOR THE USE OF THE INTENDED RECIPIENT. GLASS AND METAL CRAFT AND ITS CUSTOMERS ARE NOT RESPONSIBLE FOR USE BY OTHER PARTIES.



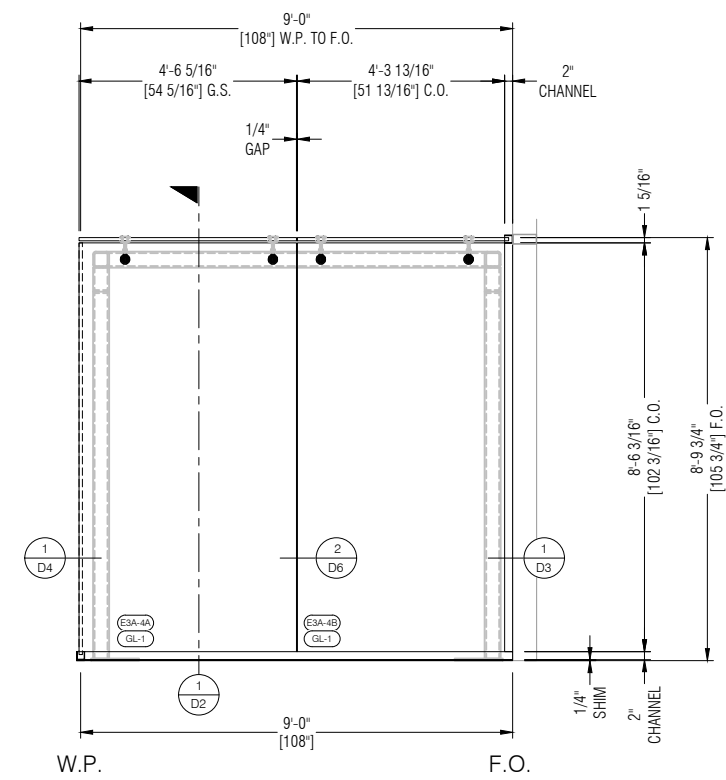
1 SECTION THRU VESTIBULE 3A
E1B DRAWING SCALE: REF: 4/P1B
24x36: 1/2" = 1'-0"
11x17: 1/4" = 1'-0"



2 ELEVATION AT RETURN
E1B DRAWING SCALE: REF: 1/P1B
24x36: 1/2" = 1'-0"
11x17: 1/4" = 1'-0"



3 ELEVATION AT VESTIBULE 3A
E1B DRAWING SCALE: REF: 1/P1B
24x36: 1/2" = 1'-0"
11x17: 1/4" = 1'-0"



4 ELEVATION AT RETURN
E1B DRAWING SCALE: REF: 1/P1B
24x36: 1/2" = 1'-0"
11x17: 1/4" = 1'-0"

SUBMITTED FOR PRELIMINARY REVIEW. FOR DESIGN REPRESENTATION ONLY. THIS SUBMITTAL HAS NOT BEEN ENGINEERED TO ACCOMMODATE SITE-SPECIFIC CONDITIONS FOR THIS SYSTEM.

REVISION	DATE
SI	XX.XX.XX
1	-
2	-
3	-
4	-

DRAWN BY: AL DATE: XX.XX.XX

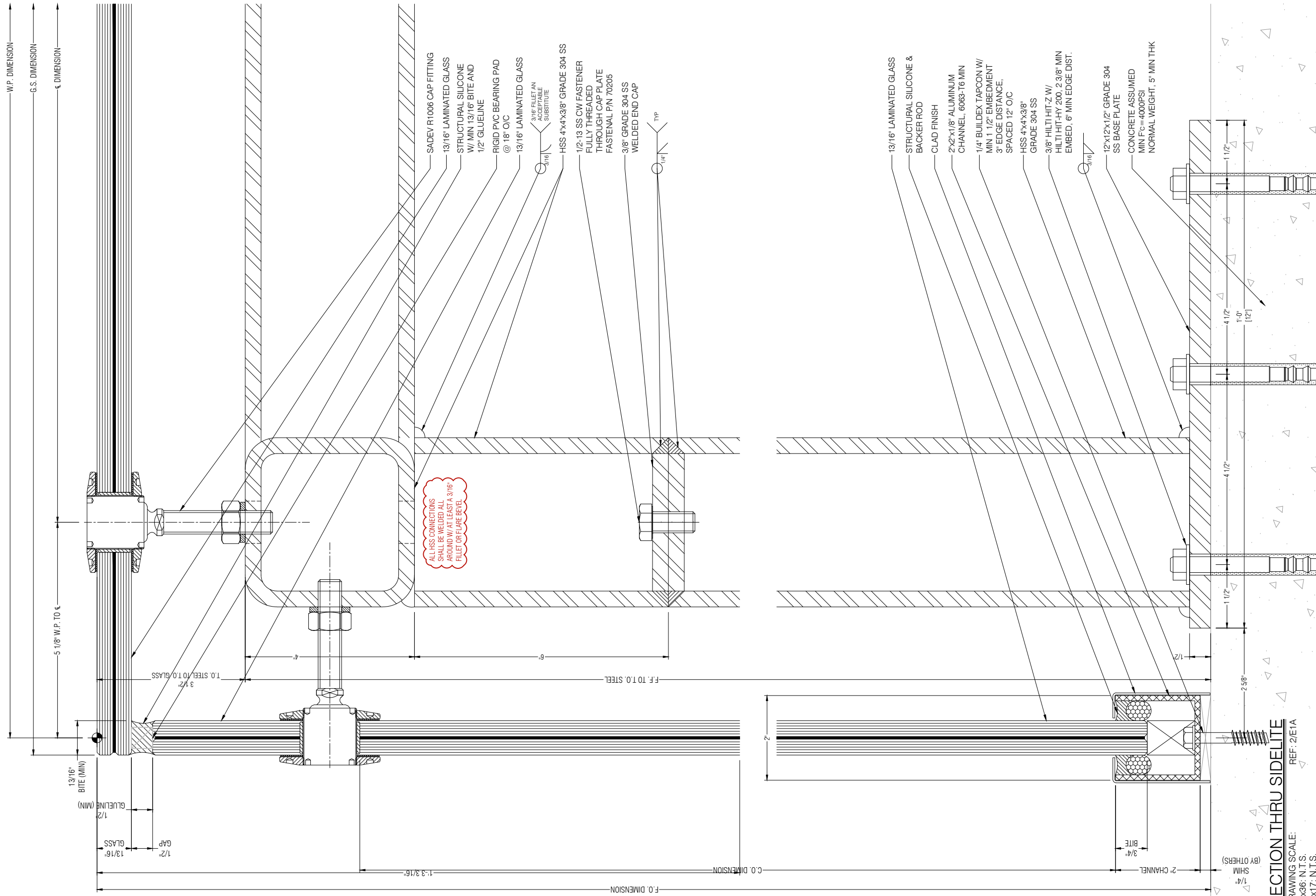
ARCHITECT: ARCHITECTURE FIRM NAME

GMC SYSTEM TYPE: OSTIUM VESTIBULES - TYPE 3

PROJECT NAME: PROJECT NAME

SHEET DESCRIPTION: ELEVATIONS

SHEET: E1B



W.P. DIMENSION
G.S. DIMENSION
ε DIMENSION

ALL HSS CONNECTIONS SHALL BE WELDED ALL AROUND W/ AT LEAST A 3/16" FILLET OR FLARE BEVEL



PROPRIETARY NOTICE:
THIS DRAWING SHEET AND CONTENTS HEREIN ARE PROPERTY OF GLASS AND METAL CRAFT AND ITS CUSTOMERS. USE OF THESE DRAWINGS, ITS CONTENT AND DESIGN CONCEPTS ARE INTENDED FOR THE USE OF THE INTENDED RECIPIENT. GLASS AND METAL CRAFT AND ITS CUSTOMERS ARE NOT RESPONSIBLE FOR USE BY OTHER PARTIES.

SUBMITTED FOR PRELIMINARY REVIEW. FOR DESIGN REPRESENTATION ONLY. THIS SUBMITTAL HAS NOT BEEN ENGINEERED TO ACCOMMODATE SITE-SPECIFIC CONDITIONS FOR THIS SYSTEM.

REVISION	DATE
SI	XX.XX.XX
1	-
2	-
3	-
4	-

DRAWN BY: AL DATE: XX.XX.XX

ARCHITECT: ARCHITECTURE FIRM NAME

GMC SYSTEM TYPE: OSTIUM VESTIBULES - TYPE 3

PROJECT NAME: PROJECT NAME

SHEET DESCRIPTION: DETAILS

SHEET: D2

SECTION THRU SIDELITE REF: 2/E1A
DRAWING SCALE: 24x36: N.T.S. 11x17: N.T.S.



**GLASS+
METAL
CRAFT**

PROPRIETARY NOTICE:

THIS DRAWING SHEET AND CONTENTS HEREIN ARE PROPERTY OF GLASS AND METAL CRAFT AND ITS CUSTOMERS. USE OF THESE DRAWINGS, ITS CONTENT AND DESIGN CONCEPTS ARE INTENDED FOR THE USE OF THE INTENDED RECIPIENT. GLASS AND METAL CRAFT AND ITS CUSTOMERS ARE NOT RESPONSIBLE FOR USE BY OTHER PARTIES.

SUBMITTED FOR PRELIMINARY REVIEW. FOR DESIGN REPRESENTATION ONLY. THIS SUBMITTAL HAS NOT BEEN ENGINEERED TO ACCOMMODATE SITE-SPECIFIC CONDITIONS FOR THIS SYSTEM.

REVISION	DATE
SI	XX.XX.XX
1	-
2	-
3	-
4	-

DRAWN BY: AL DATE: XX.XX.XX

ARCHITECT: ARCHITECTURE FIRM NAME

GMC SYSTEM TYPE:

OSTIUM VESTIBULES - TYPE 3

PROJECT NAME:

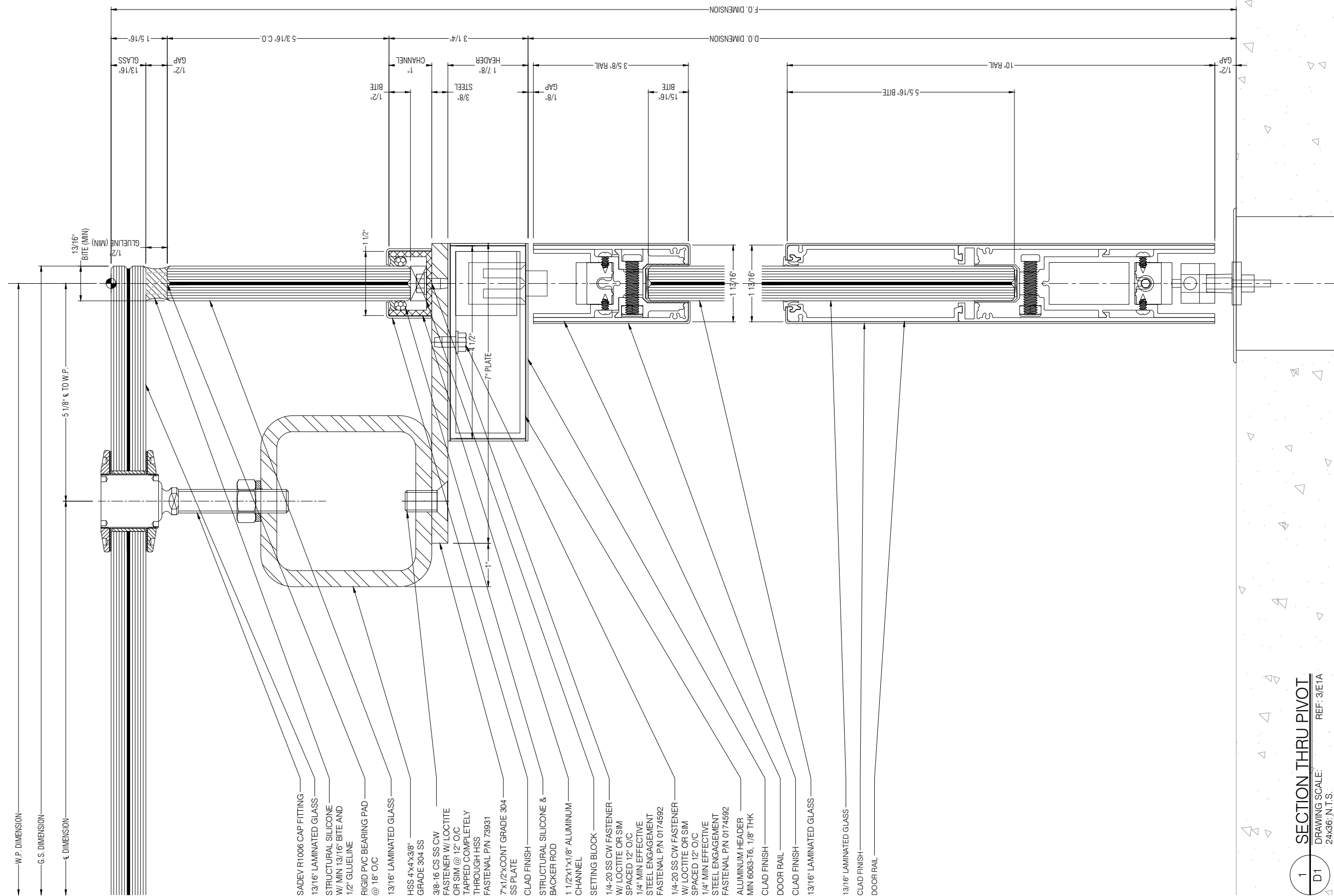
PROJECT NAME

SHEET DESCRIPTION:

DETAILS

SHEET:

D1

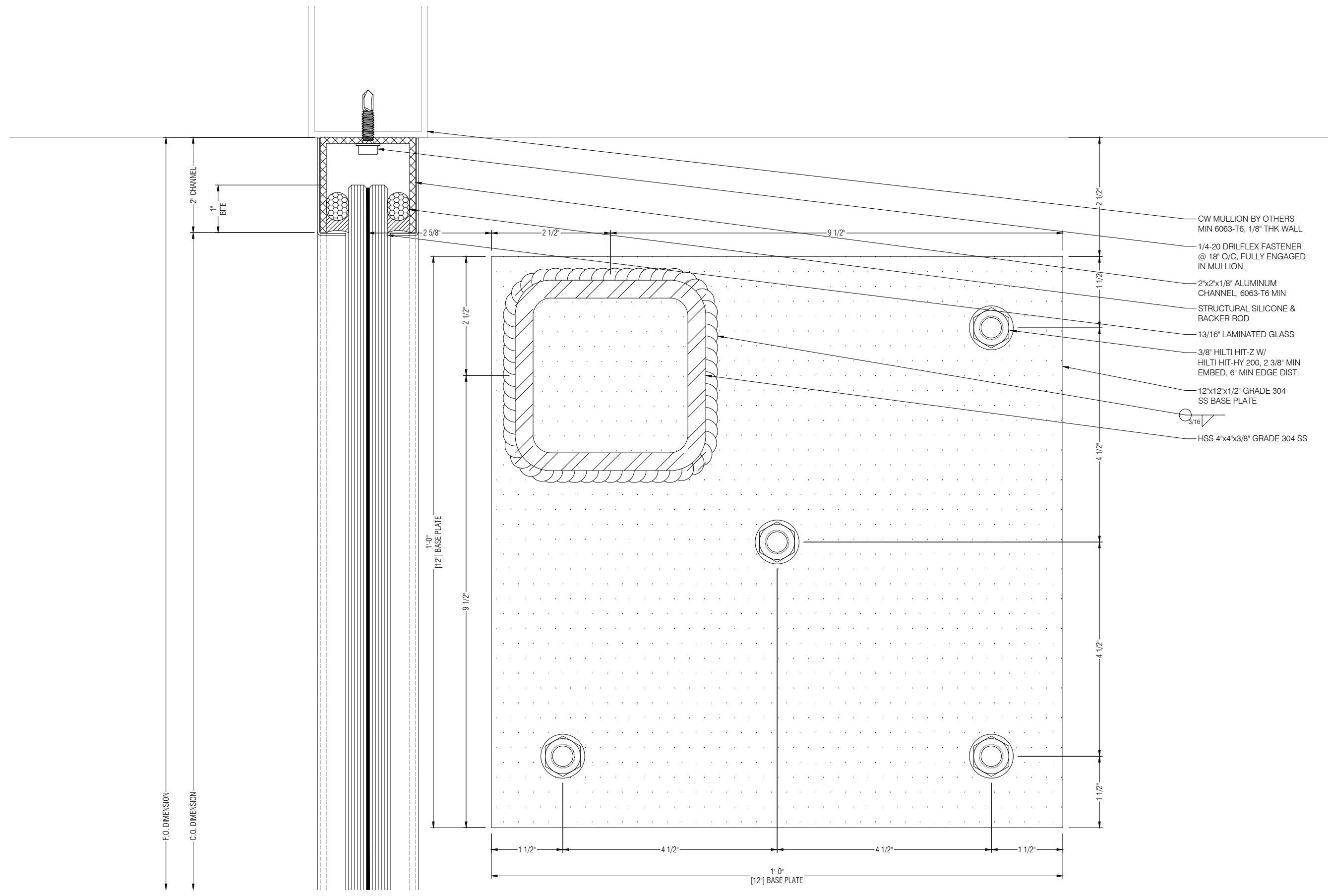




**GLASS+
METAL
CRAFT**

PROPRIETARY NOTICE:

THIS DRAWING SHEET AND CONTENTS HEREIN ARE PROPERTY OF GLASS AND METAL CRAFT AND ITS CUSTOMERS. USE OF THESE DRAWINGS, ITS CONTENT AND DESIGN CONCEPTS ARE INTENDED FOR THE USE OF THE INTENDED RECIPIENT. GLASS AND METAL CRAFT AND ITS CUSTOMERS ARE NOT RESPONSIBLE FOR USE BY OTHER PARTIES.



- CW MULLION BY OTHERS
MIN 6063-T6, 1/8" THK WALL
- 1/4-20 DRILFLEX FASTENER
@ 18" O/C, FULLY ENGAGED
IN MULLION
- 2"x2"x1/8" ALUMINUM
CHANNEL, 6063-T6 MIN
- STRUCTURAL SILICONE &
BACKER ROD
- 13/16" LAMINATED GLASS
- 3/8" HILTI HIT-Z W/
HILTI HIT-HY 200, 2 3/8" MIN
EMBED, 6" MIN EDGE DIST.
- 12"x12"x1/2" GRADE 304
SS BASE PLATE
- 3/16"
- HSS 4"x4"x3/8" GRADE 304 SS

SUBMITTED FOR
PRELIMINARY REVIEW. FOR
DESIGN REPRESENTATION
ONLY. THIS SUBMITTAL HAS
NOT BEEN ENGINEERED TO
ACCOMMODATE
SITE-SPECIFIC CONDITIONS
FOR THIS SYSTEM.

REVISION	DATE
SI	XX.XX.XX
1	-
2	-
3	-
4	-

DRAWN BY: AL DATE: XX.XX.XX

ARCHITECT:
ARCHITECTURE FIRM NAME

GMC SYSTEM TYPE:
OSTIUM VESTIBULES - TYPE 3

PROJECT NAME:
PROJECT NAME

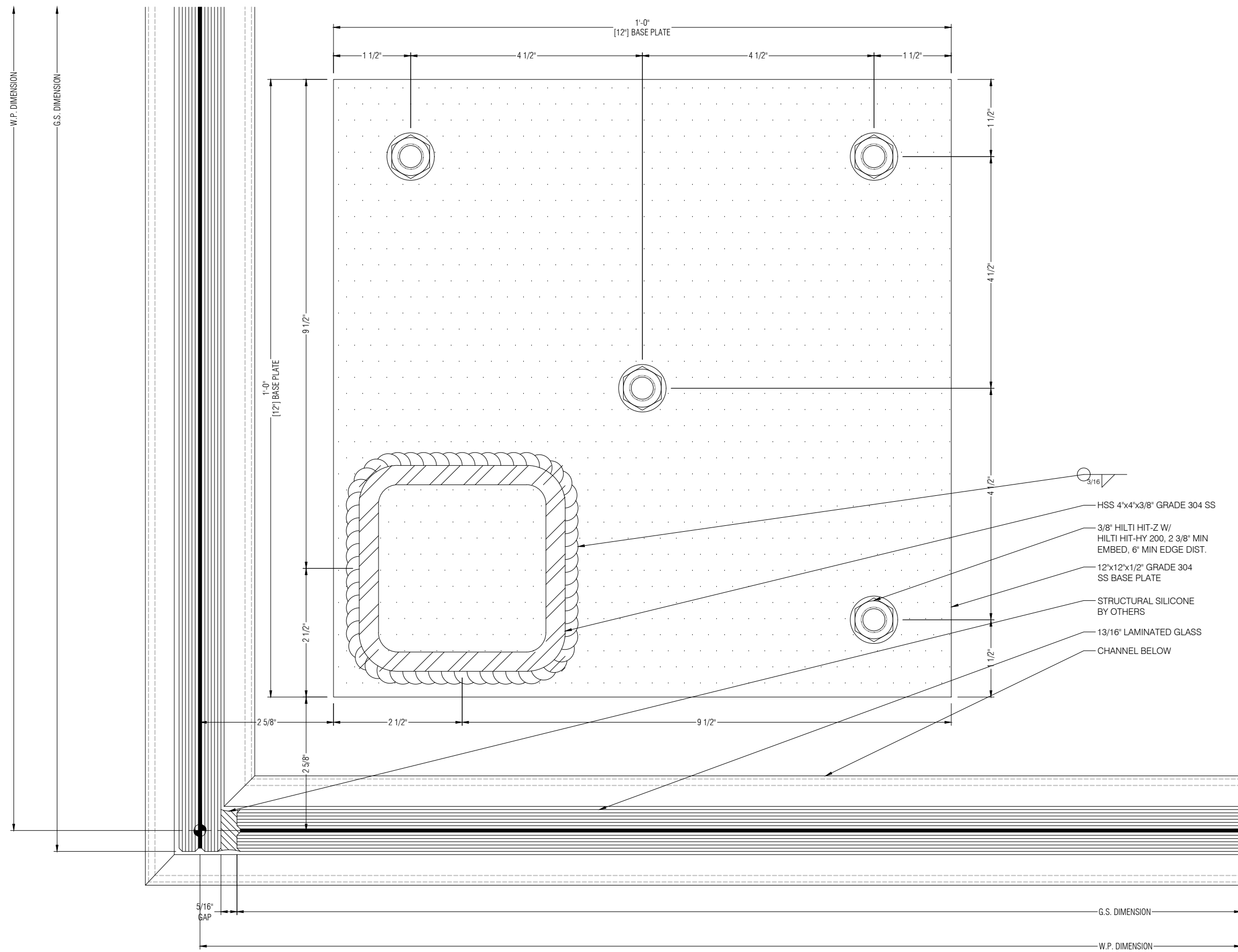
SHEET DESCRIPTION:
DETAILS

SHEET:
D3



GLASS+
METAL
CRAFT

PROPRIETARY NOTICE:
THIS DRAWING SHEET AND CONTENTS HEREIN ARE PROPERTY OF GLASS AND METAL CRAFT AND ITS CUSTOMERS. USE OF THESE DRAWINGS, ITS CONTENT AND DESIGN CONCEPTS ARE INTENDED FOR THE USE OF THE INTENDED RECIPIENT. GLASS AND METAL CRAFT AND ITS CUSTOMERS ARE NOT RESPONSIBLE FOR USE BY OTHER PARTIES.



- 3/16" CHAMFER
- HSS 4"x4"x3/8" GRADE 304 SS
- 3/8" HILTI HIT-Z W/ HILTI HIT-HY 200, 2 3/8" MIN EMBED, 6" MIN EDGE DIST.
- 12"x12"x1/2" GRADE 304 SS BASE PLATE
- STRUCTURAL SILICONE BY OTHERS
- 13/16" LAMINATED GLASS
- CHANNEL BELOW

SUBMITTED FOR PRELIMINARY REVIEW. FOR DESIGN REPRESENTATION ONLY. THIS SUBMITTAL HAS NOT BEEN ENGINEERED TO ACCOMMODATE SITE-SPECIFIC CONDITIONS FOR THIS SYSTEM.

REVISION	DATE
SI	XX.XX.XX
1	-
2	-
3	-
4	-

DRAWN BY: AL DATE: XX.XX.XX

ARCHITECT: ARCHITECTURE FIRM NAME

GMC SYSTEM TYPE:

OSTIUM VESTIBULES - TYPE 3

PROJECT NAME:

PROJECT NAME

SHEET DESCRIPTION:

DETAILS

SHEET:

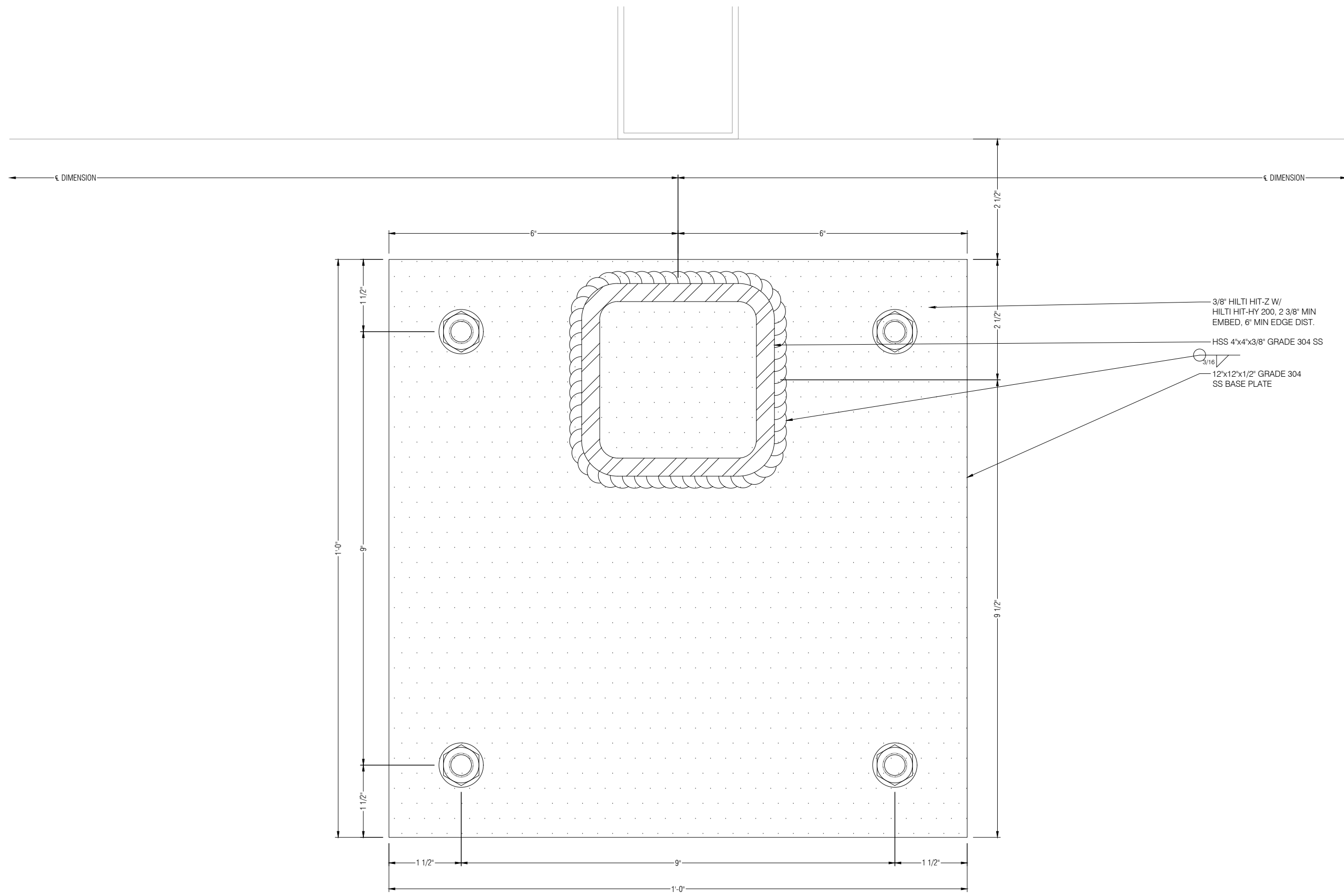
D4

1 BASE PLATE AT 90° GLASS JOINT
D4 DRAWING SCALE: 24x36: FULL 11x17: HALF REF: 1/P1A



GLASS+
METAL
CRAFT

PROPRIETARY NOTICE:
THIS DRAWING SHEET AND CONTENTS HEREIN ARE PROPERTY OF GLASS AND METAL CRAFT AND ITS CUSTOMERS. USE OF THESE DRAWINGS, ITS CONTENT AND DESIGN CONCEPTS ARE INTENDED FOR THE USE OF THE INTENDED RECIPIENT. GLASS AND METAL CRAFT AND ITS CUSTOMERS ARE NOT RESPONSIBLE FOR USE BY OTHER PARTIES.



- 3/8" HILTI HIT-Z W/
HILTI HIT-HY 200, 2 3/8" MIN
EMBED, 6" MIN EDGE DIST.
- HSS 4"x4"x3/8" GRADE 304 SS
- 3/16"
- 12"x12"x1/2" GRADE 304
SS BASE PLATE

SUBMITTED FOR
PRELIMINARY REVIEW. FOR
DESIGN REPRESENTATION
ONLY. THIS SUBMITTAL HAS
NOT BEEN ENGINEERED TO
ACCOMMODATE
SITE-SPECIFIC CONDITIONS
FOR THIS SYSTEM.

REVISION	DATE
SI	XX.XX.XX
1	-
2	-
3	-
4	-

DRAWN BY: AL DATE: XX.XX.XX

ARCHITECT: ARCHITECTURE FIRM NAME

GMC SYSTEM TYPE:
OSTIUM VESTIBULES - TYPE 3

PROJECT NAME:
PROJECT NAME

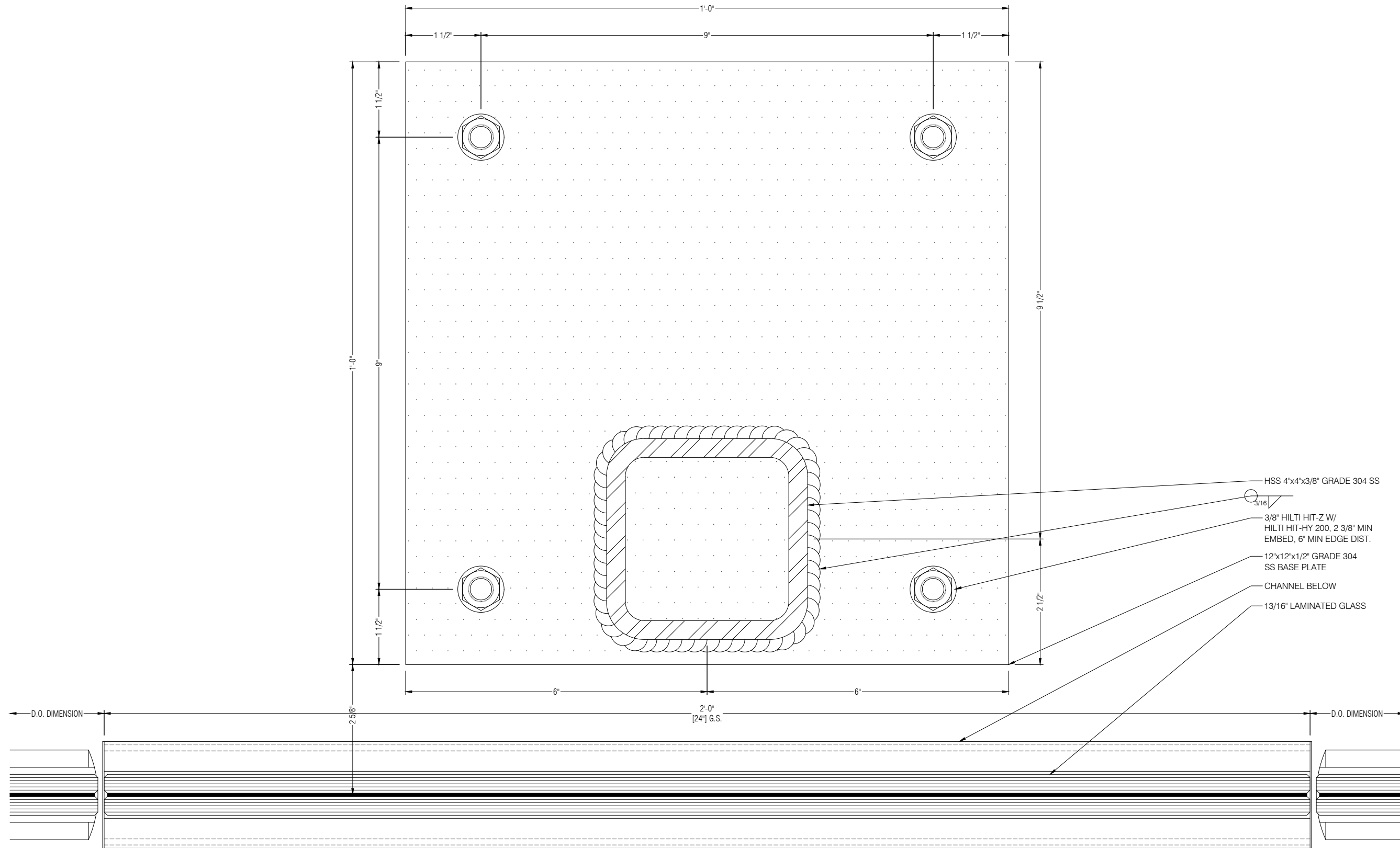
SHEET DESCRIPTION:
DETAILS

SHEET:
D5



**GLASS+
METAL
CRAFT**

PROPRIETARY NOTICE:
THIS DRAWING SHEET AND CONTENTS HEREIN ARE PROPERTY OF GLASS AND METAL CRAFT AND ITS CUSTOMERS. USE OF THESE DRAWINGS, ITS CONTENT AND DESIGN CONCEPTS ARE INTENDED FOR THE USE OF THE INTENDED RECIPIENT. GLASS AND METAL CRAFT AND ITS CUSTOMERS ARE NOT RESPONSIBLE FOR USE BY OTHER PARTIES.



- HSS 4"x4"x3/8" GRADE 304 SS
- 3/8" HILTI HIT-Z W/
HILTI HIT-HY 200, 2 3/8" MIN
EMBED, 6" MIN EDGE DIST.
- 12"x12"x1/2" GRADE 304
SS BASE PLATE
- CHANNEL BELOW
- 13/16" LAMINATED GLASS

SUBMITTED FOR
PRELIMINARY REVIEW. FOR
DESIGN REPRESENTATION
ONLY. THIS SUBMITTAL HAS
NOT BEEN ENGINEERED TO
ACCOMMODATE
SITE-SPECIFIC CONDITIONS
FOR THIS SYSTEM.

REVISION	DATE
SI	XX.XX.XX
1	-
2	-
3	-
4	-

DRAWN BY: AL DATE: XX.XX.XX

ARCHITECT:
ARCHITECTURE FIRM NAME

GMC SYSTEM TYPE:

OSTIUM VESTIBULES - TYPE 3

PROJECT NAME:
PROJECT NAME

SHEET DESCRIPTION:
DETAILS

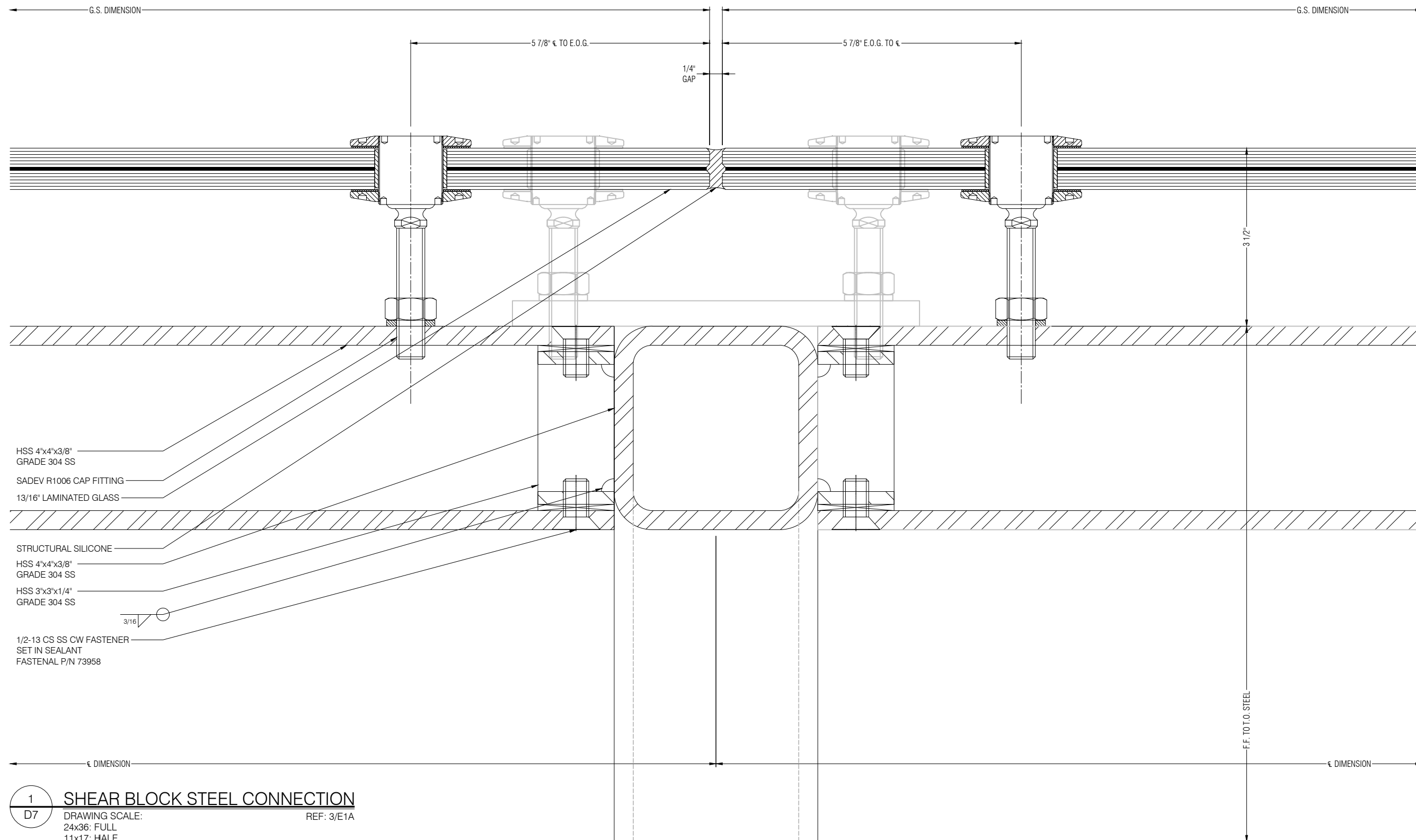
SHEET:
D6

1 INTERIOR INTERMEDIATE BASE PLATE
D6 DRAWING SCALE: REF: 1/P1A
24x36: FULL
11x17: HALF



**GLASS+
METAL
CRAFT**

PROPRIETARY NOTICE:
THIS DRAWING SHEET AND CONTENTS HEREIN ARE PROPERTY OF GLASS AND METAL CRAFT AND ITS CUSTOMERS. USE OF THESE DRAWINGS, ITS CONTENT AND DESIGN CONCEPTS ARE INTENDED FOR THE USE OF THE INTENDED RECIPIENT. GLASS AND METAL CRAFT AND ITS CUSTOMERS ARE NOT RESPONSIBLE FOR USE BY OTHER PARTIES.



- HSS 4"x4"x3/8"
GRADE 304 SS
- SADEV R1006 CAP FITTING
- 13/16" LAMINATED GLASS
- STRUCTURAL SILICONE
- HSS 4"x4"x3/8"
GRADE 304 SS
- HSS 3"x3"x1/4"
GRADE 304 SS
- 1/2-13 CS SS CW FASTENER
SET IN SEALANT
FASTENAL P/N 73958

SUBMITTED FOR
PRELIMINARY REVIEW. FOR
DESIGN REPRESENTATION
ONLY. THIS SUBMITTAL HAS
NOT BEEN ENGINEERED TO
ACCOMMODATE
SITE-SPECIFIC CONDITIONS
FOR THIS SYSTEM.

REVISION	DATE
SI	XX.XX.XX
1	-
2	-
3	-
4	-

DRAWN BY: AL DATE: XX.XX.XX

ARCHITECT:
ARCHITECTURE FIRM NAME

GMC SYSTEM TYPE:
OSTIUM VESTIBULES - TYPE 3

PROJECT NAME:
PROJECT NAME

SHEET DESCRIPTION:
DETAILS

SHEET:
D7

1 SHEAR BLOCK STEEL CONNECTION
D7 DRAWING SCALE: REF: 3/E1A
24x36: FULL
11x17: HALF



**GLASS+
METAL
CRAFT**

PROPRIETARY NOTICE:
THIS DRAWING SHEET AND CONTENTS HEREIN ARE PROPERTY OF GLASS AND METAL CRAFT AND ITS CUSTOMERS. USE OF THESE DRAWINGS, ITS CONTENT AND DESIGN CONCEPTS ARE INTENDED FOR THE USE OF THE INTENDED RECIPIENT. GLASS AND METAL CRAFT AND ITS CUSTOMERS ARE NOT RESPONSIBLE FOR USE BY OTHER PARTIES.

SUBMITTED FOR PRELIMINARY REVIEW. FOR DESIGN REPRESENTATION ONLY. THIS SUBMITTAL HAS NOT BEEN ENGINEERED TO ACCOMMODATE SITE-SPECIFIC CONDITIONS FOR THIS SYSTEM.

REVISION	DATE
SI	XX.XX.XX
1	-
2	-
3	-
4	-

DRAWN BY: AL DATE: XX.XX.XX

ARCHITECT:
ARCHITECTURE FIRM NAME

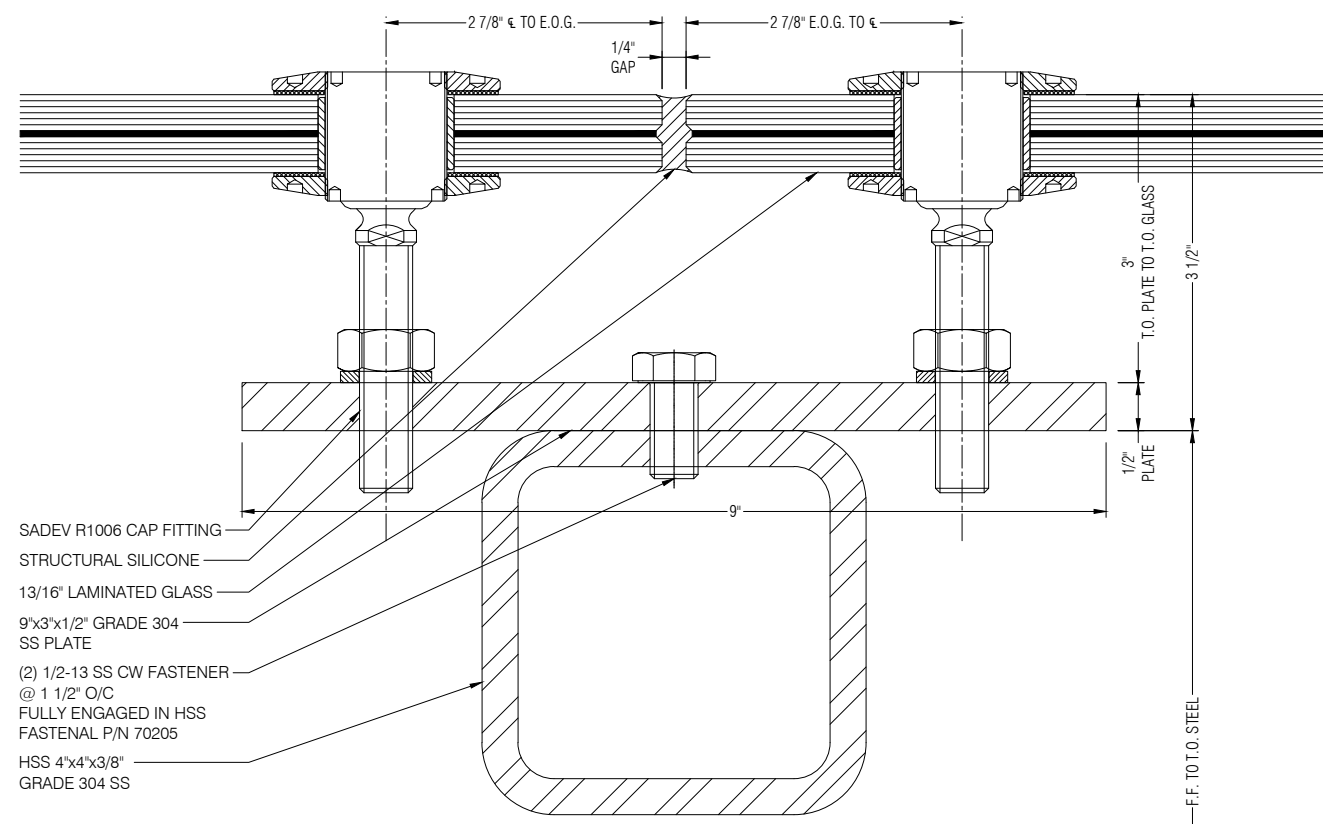
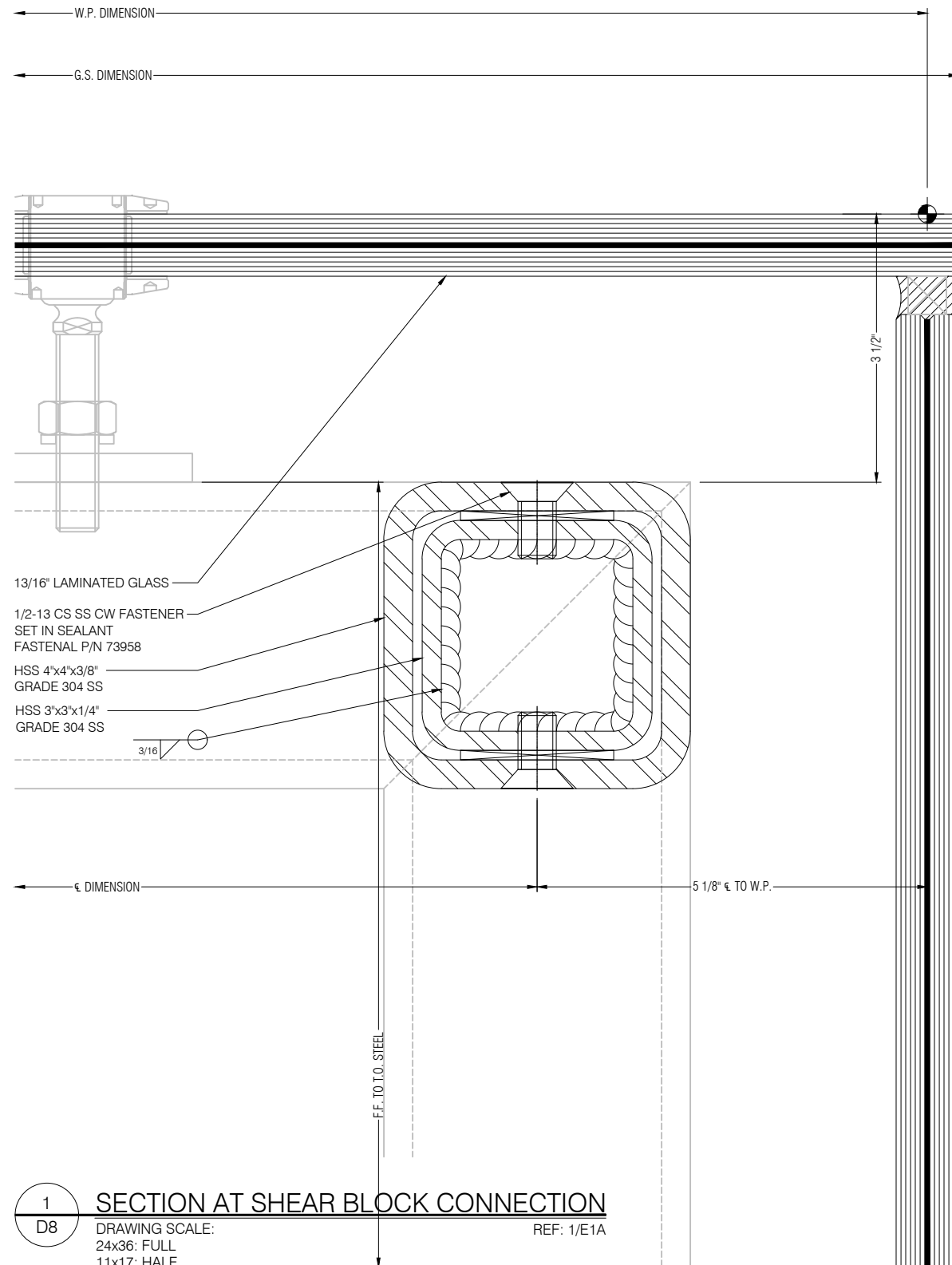
GMC SYSTEM TYPE:

OSTIUM VESTIBULES - TYPE 3

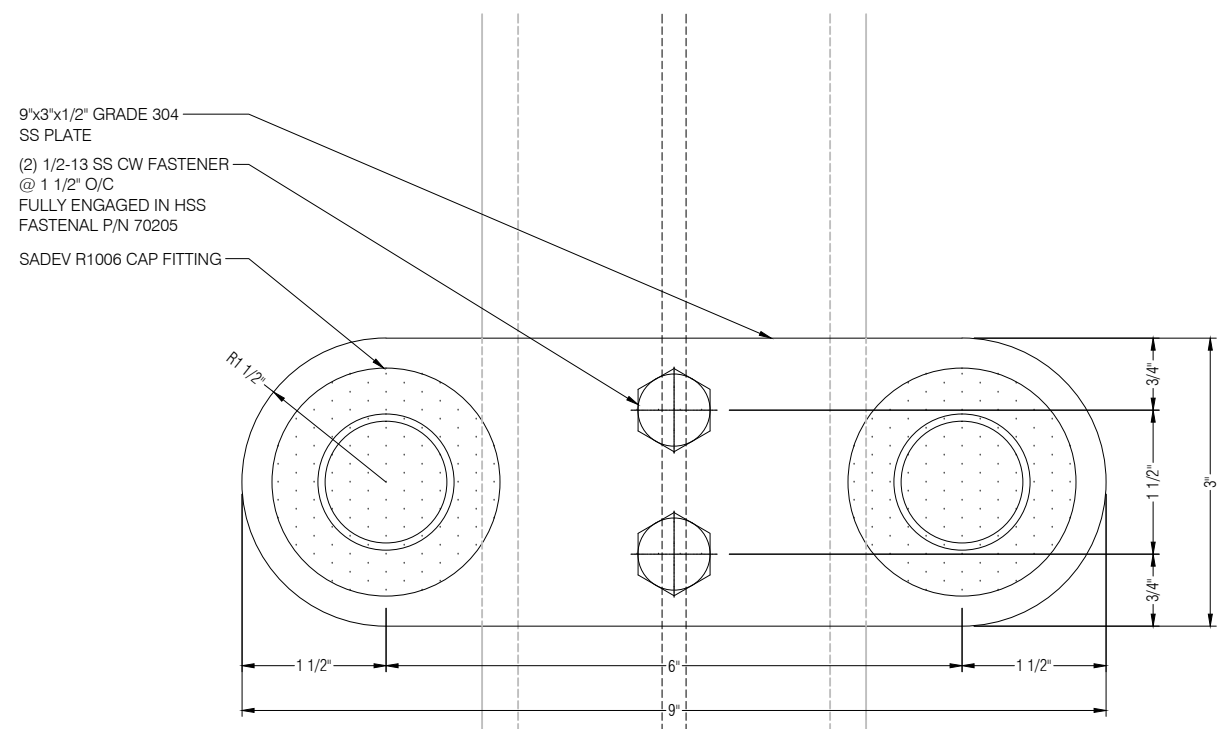
PROJECT NAME:
PROJECT NAME

SHEET DESCRIPTION:
DETAILS

SHEET:
D8



2 INTERMEDIATE FITTINGS CONNECTION
D8 DRAWING SCALE: 24x36: FULL 11x17: HALF REF: 4/P1A

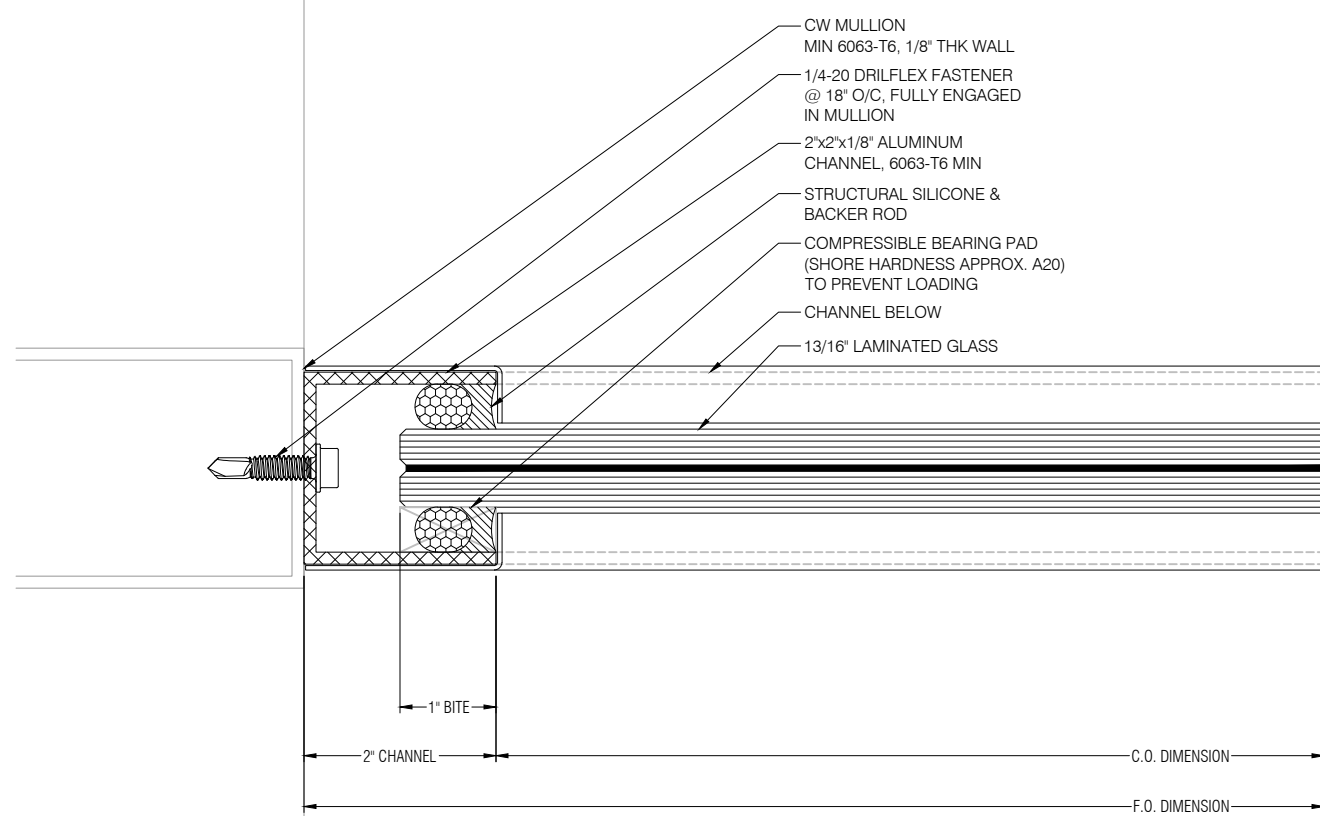


3 INTERMEDIATE FITTINGS CONNECTION PLAN
D8 DRAWING SCALE: 24x36: FULL 11x17: HALF REF: 1/E1A



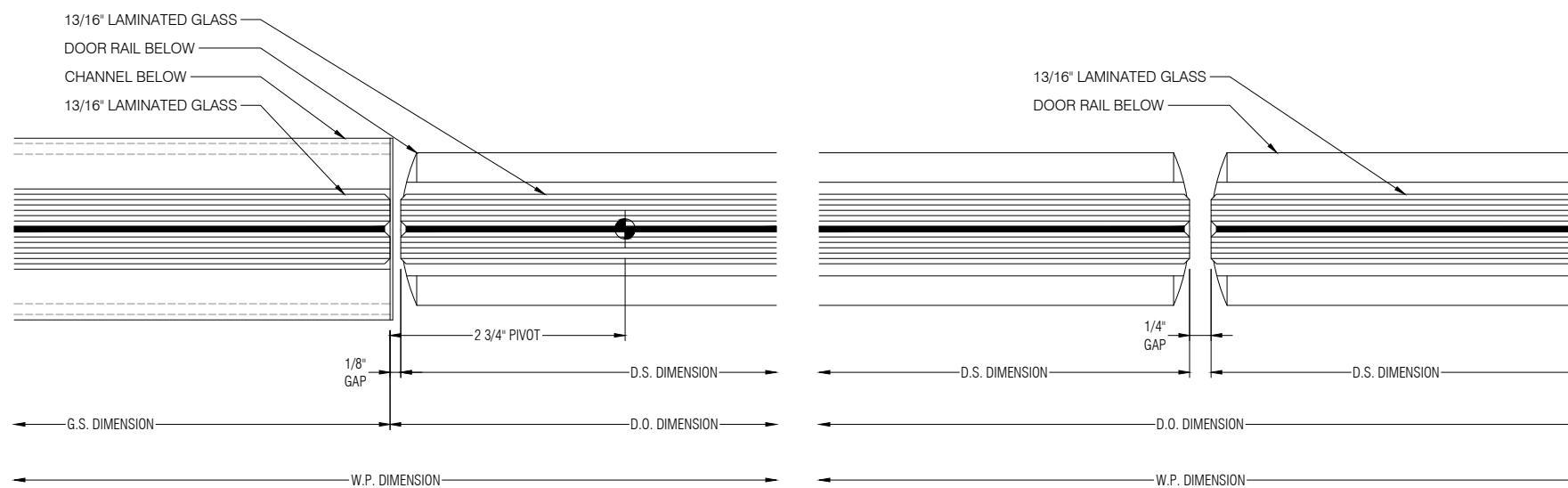
GLASS+
METAL
CRAFT

PROPRIETARY NOTICE:
THIS DRAWING SHEET AND CONTENTS HEREIN ARE PROPERTY OF GLASS AND METAL CRAFT AND ITS CUSTOMERS. USE OF THESE DRAWINGS, ITS CONTENT AND DESIGN CONCEPTS ARE INTENDED FOR THE USE OF THE INTENDED RECIPIENT. GLASS AND METAL CRAFT AND ITS CUSTOMERS ARE NOT RESPONSIBLE FOR USE BY OTHER PARTIES.



1 CHANNEL CONNECTION TO CURTAIN WALL

D9 DRAWING SCALE: REF: 1/E1A
24x36: FULL
11x17: HALF



2 SIDELITE TO PIVOT

D9 DRAWING SCALE: REF: 3/E1A
24x36: FULL
11x17: HALF

3 STRIKE TO STRIKE

D9 DRAWING SCALE: REF: 3/E1A
24x36: FULL
11x17: HALF

SUBMITTED FOR PRELIMINARY REVIEW. FOR DESIGN REPRESENTATION ONLY. THIS SUBMITTAL HAS NOT BEEN ENGINEERED TO ACCOMMODATE SITE-SPECIFIC CONDITIONS FOR THIS SYSTEM.

REVISION	DATE
SI	XX.XX.XX
1	-
2	-
3	-
4	-

DRAWN BY: AL DATE: XX.XX.XX

ARCHITECT: ARCHITECTURE FIRM NAME

GMC SYSTEM TYPE: OSTIUM VESTIBULES - TYPE 3

PROJECT NAME: PROJECT NAME

SHEET DESCRIPTION: DETAILS

SHEET: D9